

GPS WRECK CHARTS

Give your next fishing trip a new twist with these detailed maps. Explore the waters with GPS & Lo-ran numbers. Charts are fully laminated and very useful for the recreational fisherman or divers who like to travel to new and unknown locations for that possible great catch or find! Charts are fully laminated and include locations of inlet sea buoys, compass rose, 3 mile and 12 mile zones, danger and caution areas and the wrecks.

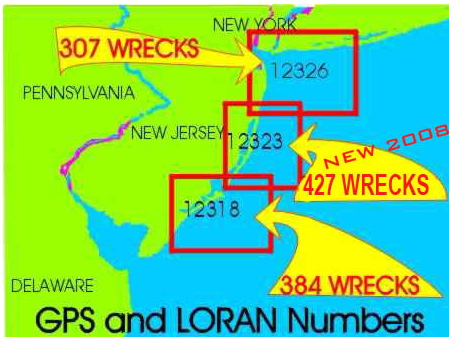
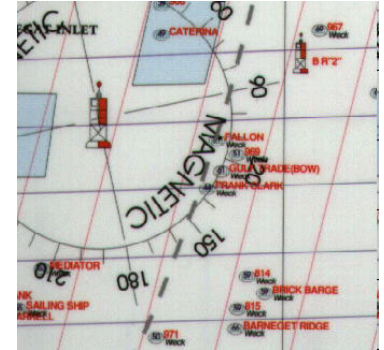
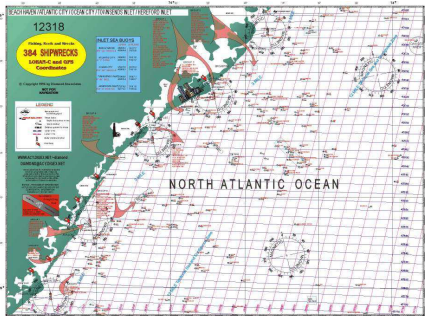
Chart#

Description

GPS12318 Beach Haven to Hereford Inlet, 334+ wrecks. South Jersey chart from Little beach to Wildwood.

GPS12326 Fire Island to Sea Girt Inlet, 307+ wrecks. Sandy hook chart, it covers from Fire Island on Long Island to Sea Girt Inlet in New Jersey.

GPS12323 Sea Girt to Little Egg Chart, 331+ wrecks. Central Jersey chart, covers from Sea Girt to Little Beach



The area of coverage of each chart is approximately 28 miles by 36 miles.

On the close-up of the wreck chart notice the red letters, these are the wreck names, 14 showing in this view segment. All wrecks are listed on the back with additional information including GPS and LORAN coordinates.