



ST. CROIX ROD

ROD BUILDER CATALOG | 2012



To make the best rods in the business, St. Croix must partner with the best suppliers. We're especially proud of our network of graphite material partners, all of whom contribute to the exceptional performance, quality and value that define a St. Croix blank. For 2012, the 3M Company, a long-time St. Croix supply partner, will be supplying their exciting 3M™ Matrix Resin to fuse the graphite in our highest performance SC^{vi}, SC^v, SC^{iv} and select SCⁱⁱ graphite blanks. 3M's remarkable composite resin uses nano-technology to significantly improve the strength and durability of graphite blanks, and when used in conjunction with our other advanced materials and proprietary design and manufacturing technologies, furthers our ability to build the best blanks on earth.

A BRIEF BACKGROUND ON GRAPHITE:

The fishing tackle industry uses the words graphite and carbon interchangeably. Technically speaking, the correct term is "carbon."

A lot has changed since the introduction of the first graphite fishing rods back in the mid-1970s. Designed largely by trial and error, early graphite rods were inspired by the imagination, experience and talent of the rod designers – and the availability of a steady stream of new and improved graphite fibers.

Graphite fiber, a by-product of the space race, evolved quickly as aerospace applications for this exciting new material expanded. Each generation of "new" graphite was stronger and stiffer (i.e., "higher modulus") than previous generations as the "space race" ratcheted graphite development into high gear.

Rod makers took notice, and soon the space race created a "modulus race" in the fishing rod industry. As each new high-modulus graphite

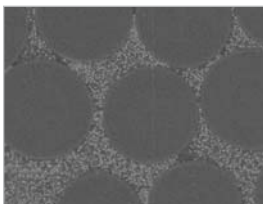
fiber was developed for aerospace, rod designers used it to create lighter, faster, more responsive fishing rods.

In the past decade, everything changed. Graphite fibers are now available in a huge selection of modulus and strength, and new high-modulus / high-strain fibers deliver both increased stiffness and superior strength. St. Croix currently uses nine different graphite materials formulated to our exact specifications to design and build over 30 different series of rods – one of the largest in the industry.

Rod design has also evolved from the draftsman's table to the computer, and we now use sophisticated mathematical algorithms to design precise tapers for each graphite material to achieve the exact performance characteristics we want in our rods.

3M™ MATRIX RESIN

THE TECHNOLOGY THAT MAKES OUR RODS SO STRONG IS INVISIBLE TO THE NAKED EYE. AT LEAST UNTIL YOU SET THE HOOK.



Carbon fiber composite shows uniform distribution of nano silica particles.

The 3M Company, the global leader in adhesive technology, recently introduced a new breakthrough resin that uses nano-sized (ultra-microscopic) spheres of silica as a homogeneous, non-abrasive filler between the carbon fibers of a graphite rod blank, which results in a much stronger, more sensitive finished product. We've named our formulation of this new resin NSi (Nano Silica), and we use it to build our highest performance graphite rods.

The "nano-silica" particles in 3M's Matrix Resin are uniformly distributed and densely packed in the resin that binds the individual graphite fibers, which reinforces them during compression when the rod is flexed. This significantly increases the fibers' compression strength by resisting micro-buckling – for improved hoop and flex strength of the blank. The result is a 30% (or more) stronger blank without any change in the weight, action or power of the finished rod.



The nano-silica filler also improves the resin's adhesive bond between the carbon fibers, which increases the internal shear strength of the rod blank while further improving the flex strength. Almost twice as hard as conventional resins when fully cured, our tests reveal that rods manufactured with 3M's new Matrix Resin show both an increase in modulus for improved sensitivity, and a significant increase in fracture resistance and overall blank toughness.

The end results are astonishing. Rods built with 3M™ Matrix Resin are stronger, more durable and tougher – with significantly improved hoop/flex strength and resistance to fracture. All without an increase in weight or a change in the rod's action or power.

Strength and fatigue testing being performed on the Dynamic Analyzer. This machine is capable of simulating over 15,000 hard hook sets in 24 hours.



“The 3M™ Matrix Resin has opened the door for us to become more creative in our rod blank designs. The strength improvement we’ve seen in our laboratory is incredible, with a 30% average increase in strength on existing products. The 3M™ Matrix Resin also allows us to push the limits of design in several of our rod series.

We are able to create substantially lighter, more sensitive rods without compromising performance.”

— Jason Brunner, St. Croix’s Director of Engineering.

ST. CROIX TECHNOLOGIES:

A superior resin does not automatically result in a superior fishing rod. But when combined with St. Croix’s state-of-the-art computer-assisted rod design capabilities, our own proprietary design and manufacturing technologies, and over 60 years of rod-making experience, the new 3M™ Matrix Resin makes a great rod even better.

ADVANCED REINFORCING TECHNOLOGY™ (ART™)

St. Croix’s Advanced Reinforcing Technology (ART) uses horizontally wrapped, high-strength carbon fibers on the inside of the hollow blanks to strengthen critical areas of our highest performance rods – without adding bulk or extra weight. (See page 4)

INTEGRATED POLY CURVE® (IPC®) TECHNOLOGY

St. Croix’s proprietary Integrated Poly Curve (IPC) Technology was another breakthrough in blank design because it allows us to design rod tapers in continuous flowing curves instead of “step tapers” used previously. This results in smoother casting with no weak taper transition points. The continuous-curve tapers also transmit vibrations more efficiently for noticeably enhanced sensitivity. (See page 4)

ROD BLANKS OFFERED IN 2012 WITH THE NEW 3M™ MATRIX RESIN

In 2012, the following St. Croix blank series will be built with 3M™ Matrix Resin:

SC^v fly, spinning and casting blanks

SC^{iv} spinning, casting and musky blanks

SCⁱⁱ graphite offshore blanks

WHAT IS MODULUS?

Modulus is the physical measure of a material’s stiffness, equal to the ratio of applied load (stress) to the resulting deformation of a material (strain). A fiber with higher modulus is harder to bend – and will snap back faster – than a lower modulus fiber of the same weight. That means a rod made of high-modulus graphite requires fewer fibers to achieve the same stiffness as a rod made with lower modulus graphite – so the higher modulus rod weighs less and telegraphs vibrations with more sensitivity. But higher modulus fibers also tend to be more brittle than lower modulus fibers, so rod designers must find just the right balance between stiffness and strength when working with high-modulus graphite fibers.

KEY DESIGN FACTORS

Other factors that impact the strength, weight, sensitivity and action of a rod include the type and amount of resin used to bind the fibers together, the amount of prepreg material used, the type of scrim used to create the sheet of graphite fibers that will form the blank, the pattern used to cut the sheet to its final dimensions, and the shape of the mandrel used to roll the graphite sheet into a finished blank. Rod action and weight are also impacted by the type and placement of guides.

ST. CROIX ENGINEERING / TECHNOLOGY

When you set out to uncover what makes a St. Croix different from other rods, you need look no further than the engineer sitting right beside the rod designer. It's a partnership that's produced such breakthroughs as St. Croix's exclusive Integrated Poly Curve® and Advanced Reinforcing Technology.™ Rod performance is only as good as the design behind it – so before we even think about sending a rod through for production, we spend as much time as necessary in the design department to ensure that every St. Croix rod is engineered and developed to outperform all others.

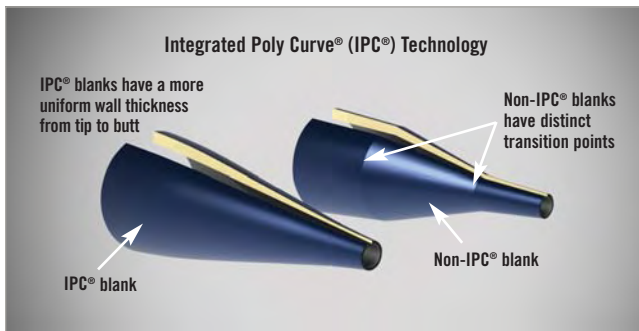


Illustration above is an exaggeration to demonstrate the difference between IPC and non-IPC blanks.



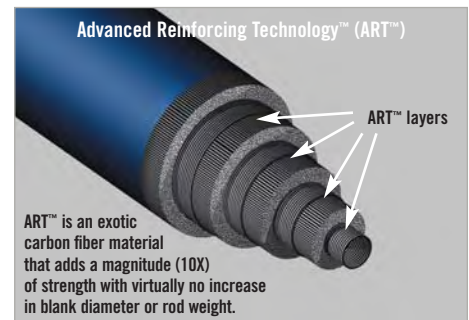
Integrated Poly Curve® (IPC®) Technology

Developed exclusively by St. Croix, Integrated Poly Curve® (IPC®) tooling technology has rapidly become the engineering leader in rodmaking. Designed to eliminate all transitional points in the rod blank, IPC-engineered rods feature smoother actions, increased strength and greater sensitivity.



Advanced Reinforcing Technology™ (ART™)

Advanced Reinforcing Technology™ (ART™) is an exotic carbon fiber material that adds a magnitude (10X) of strength with virtually no increase in blank diameter or weight. ART significantly improves the hoop strength of the blank by preventing it from deforming or “ovaling” under a severe load, such as a powerful hook set or fish battle. ART is also a critical part of our slim-profile ferrule design.



OUR BLANK MATERIALS GUIDE

Great rods begin with the highest quality blank materials and expert manufacturing techniques and processes. Each material listed here is exclusive to St. Croix and is designed for specific performance characteristics.

SC^{VI}/NSi Resin Exotic, 62,000,000 modulus, high-strain graphite fiber now featuring 3M™ Matrix Resin. Used only as a complement to other graphite materials, this very expensive graphite is too high in modulus to be used as the primary material.

SC^V/NSi Resin Extraordinary, high-modulus/high-strain graphite fiber with carbon-matte scrim. Featuring 3M™ Matrix Resin, this is the finest all-purpose blank material used in fishing rod manufacturing and is exclusive to St. Croix.

SC^{IV}/NSi Resin Exceptional, high-modulus/high-strain graphite fiber featuring 3M™ Matrix Resin. Similar to SC^V, but without the carbon-matte scrim.

SC^{IV} Exceptional, high-modulus/high-strain graphite fiber. Similar to SC^V, but without the carbon-matte scrim.

SC^{III} Advanced, high-modulus/high-strain graphite fiber. Modulus is between SC^{IV} and SC^V.

SC^{II}/NSi Resin 3M™ Matrix Resin version of our popular SC^{II} graphite fiber. This mid-modulus graphite fiber combined with 3M's nano resin creates rod blanks with unbeatable strength and durability.

SC^{II} Premium, mid-modulus graphite fiber with a higher strain rate than fibers commonly used by other rod manufacturers.

SC^{IW} A woven version of our SC^{II} material that's used exclusively in the lower section of the blank.

ART™ ART™ is an exotic carbon fiber material that adds a magnitude (10X) of strength with virtually no increase in blank diameter or weight.

SC^V GRAPHITE / NSI RESIN SPINNING BLANKS (GLOSS FOREST GREEN PEARL FINISH)



| MODEL | TYPE | EQUIVALENT ST. CROIX ROD MODEL | LENGTH | POWER | ACTION | PCS. | LINE WT. RATING | LURE WT. (OZ.) | BUTT DIAMETER (INCH) | TIP SIZE | BLANK WT. (OZ.) | SUG. HANDLE KIT |
|-------------|-----------------------|--------------------------------|--------|-------|--------|------|-----------------|----------------|----------------------|----------|-----------------|-----------------|
| 5S60ULF2-G | Trout/Panfish | LES60ULF2 | 6' | UL | FAST | 2 | 2-6 | 1/32-3/16 | 0.300 | 3.5 | 0.9 | HKS-2 |
| 5S70ULM2-G | Trout/Panfish | LES70ULM2 | 7' | UL | MOD. | 2 | 2-6 | 1/32-3/16 | 0.320 | 4.0 | 1.0 | HKS-2 |
| 5S66LF-G | Trout/Panfish/Walleye | LES66LF | 6'6" | L | FAST | 1 | 4-8 | 1/16-1/4 | 0.390 | 4.0 | 1.1 | HKS-2 |
| 5S66LF2-G | Trout/Panfish/Walleye | LES66LF2 | 6'6" | L | FAST | 2 | 4-8 | 1/16-1/4 | 0.345 | 4.0 | 1.3 | HKS-2 |
| 5S70LF-G | Trout/Panfish/Walleye | LES70LF | 7' | L | FAST | 1 | 4-8 | 1/16-1/4 | 0.395 | 4.0 | 1.3 | HKS-2 |
| 5S60MLF-G | Bass/Walleye | LES60MLF | 6' | ML | FAST | 1 | 4-10 | 1/8-3/8 | 0.425 | 4.0 | 1.1 | HKS-3 |
| 5S66MLF-G | Bass/Walleye | LES66MLF | 6'6" | ML | FAST | 1 | 4-10 | 1/8-3/8 | 0.450 | 3.5 | 1.3 | HKS-4 |
| 5S66MLF2-G | Bass/Walleye | LES66MLF2 | 6'6" | ML | FAST | 2 | 4-10 | 1/8-3/8 | 0.450 | 4.0 | 1.4 | HKS-4 |
| 5S70MLF-G | Bass/Walleye | LES70MLF | 7' | ML | FAST | 1 | 4-10 | 1/8-3/8 | 0.465 | 4.0 | 1.5 | HKS-5 |
| 5S70MLF2-G | Bass/Walleye | LES70MLF2 | 7' | ML | FAST | 2 | 4-10 | 1/8-3/8 | 0.455 | 4.0 | 1.6 | HKS-5 |
| 5S76MLXF-G | Bass/Walleye | LES76MLXF | 7'6" | ML | X-FAST | 1 | 4-10 | 1/8-3/8 | 0.480 | 3.5 | 1.6 | HKS-5 |
| 5S76MLXF2-G | Walleye | LES76MLXF2 | 7'6" | ML | X-FAST | 2 | 4-10 | 1/8-3/8 | 0.485 | 4.0 | 1.6 | HKS-5 |
| 5S60MF-G | Bass/Walleye | LES60MF | 6' | M | FAST | 1 | 6-12 | 3/16-5/8 | 0.425 | 4.5 | 1.2 | HKS-3 |
| 5S63MXF-G | Bass/Walleye | LES63MXF | 6'3" | M | X-FAST | 1 | 6-10 | 1/8-1/2 | 0.450 | 4.0 | 1.4 | HKS-3 |
| 5S66MF-G | Bass/Walleye | LES66MF | 6'6" | M | FAST | 1 | 6-12 | 3/16-5/8 | 0.445 | 4.5 | 1.4 | HKS-4 |
| 5S66MF2-G | Bass/Walleye | LES66MF2 | 6'6" | M | FAST | 2 | 6-12 | 3/16-5/8 | 0.450 | 4.5 | 1.5 | HKS-4 |
| 5S68MXF-G | Bass/Walleye | LES/LEC68MXF | 6'8" | M | X-FAST | 1 | 6-12 | 3/16-5/8 | 0.460 | 4.5 | 1.6 | HKS-4 / HKC-3 |
| 5S70MF-G | Bass/Walleye | LES70MF | 7' | M | FAST | 1 | 6-12 | 3/16-5/8 | 0.465 | 4.5 | 1.6 | HKS-5 |
| 5S70MF2-G | Bass/Walleye | LES70MF2 | 7' | M | FAST | 2 | 6-12 | 3/16-5/8 | 0.465 | 4.5 | 1.7 | HKS-5 |
| 5S76MF-G | Bass/Walleye | LES76MF | 7'6" | M | FAST | 1 | 6-12 | 3/16-5/8 | 0.480 | 4.5 | 1.8 | HKS-5 |
| 5S66MHF-G | Bass/Pike | LES66MHF | 6'6" | MH | FAST | 1 | 8-14 | 3/8-3/4 | 0.500 | 5.0 | 1.8 | HKS-5 |
| 5S70MHF-G | Bass/Pike | LES70MHF | 7' | MH | FAST | 1 | 8-14 | 3/8-3/4 | 0.510 | 5.5 | 2.1 | HKS-5 |

SC^V GRAPHITE / NSI RESIN SPINNING BLANKS (GLOSS BLUE/GREEN FLIP FINISH)



| MODEL | TYPE | EQUIVALENT ST. CROIX ROD MODEL | LENGTH | POWER | ACTION | PCS. | LINE WT. RATING | LURE WT. (OZ.) | BUTT DIAMETER (INCH) | TIP SIZE | BLANK WT. (OZ.) | SUG. HANDLE KIT |
|------------|-----------------|--------------------------------|--------|-------|--------|------|-----------------|----------------|----------------------|----------|-----------------|-----------------|
| 5S69MLXF-B | Drop Shot Bass | XS/XC69MLXF | 6'9" | ML | X-FAST | 1 | 6-10 | 1/8-1/2 | 0.430 | 4.0 | 1.7 | HKS-4 / HKC-3 |
| 5S70MLF-B | Bass/Walleye | XS70MLF | 7' | ML | FAST | 1 | 4-10 | 1/8-3/8 | 0.465 | 4.0 | 1.5 | HKS-5 |
| 5S63MXF-B | Bass/Walleye | XS63MXF | 6'3" | M | X-FAST | 1 | 6-10 | 1/8-1/2 | 0.444 | 4.5 | 1.5 | HKS-3 |
| 5S66MF-B | Bass/Walleye | XS66MF | 6'6" | M | FAST | 1 | 6-12 | 3/16-5/8 | 0.445 | 4.5 | 1.4 | HKS-4 |
| 5S610MXF-B | Shaky Head Bass | XS610MXF | 6'10" | M | X-FAST | 1 | 6-12 | 1/8-5/16 | 0.469 | 4.0 | 2.0 | HKS-4 |
| 5S70MF-B | Bass/Walleye | XS70MF | 7' | M | FAST | 1 | 6-12 | 3/16-5/8 | 0.465 | 4.5 | 1.6 | HKS-5 |
| 5S66MHF-B | Bass/Pike | XS66MHF | 6'6" | MH | FAST | 1 | 8-14 | 3/8-3/4 | 0.500 | 5.0 | 1.8 | HKS-5 |
| 5S70MHF-B | Bass/Pike | XS70MHF | 7' | MH | FAST | 1 | 8-14 | 3/8-3/4 | 0.510 | 5.5 | 2.1 | HKS-5 |

SC^V GRAPHITE / NSI RESIN CASTING BLANKS (GLOSS FOREST GREEN PEARL FINISH)



| MODEL | TYPE | EQUIVALENT ST. CROIX ROD MODEL | LENGTH | POWER | ACTION | PCS. | LINE WT. RATING | LURE WT. (OZ.) | BUTT DIAMETER (INCH) | TIP SIZE | BLANK WT. (OZ.) | SUG. HANDLE KIT |
|-----------|--------------|--------------------------------|--------|-------|--------|------|-----------------|----------------|----------------------|----------|-----------------|-----------------|
| 5C60MF-G | Bass/Walleye | LEC60MF | 6' | M | FAST | 1 | 10-17 | 1/4-5/8 | 0.425 | 4.5 | 1.4 | HKC-2 |
| 5C66MF-G | Bass/Walleye | LEC66MF | 6'6" | M | FAST | 1 | 10-17 | 1/4-5/8 | 0.460 | 4.5 | 1.8 | HKC-3 |
| 5C70MF-G | Bass/Walleye | LEC70MF | 7' | M | FAST | 1 | 10-17 | 1/4-5/8 | 0.465 | 5.0 | 2.0 | HKC-3 |
| 5C66MHF-G | Bass/Pike | LEC66MHF | 6'6" | MH | FAST | 1 | 12-20 | 3/8-1 | 0.520 | 5.0 | 2.2 | HKC-3 |
| 5C70MHF-G | Bass/Pike | LEC70MHF | 7' | MH | FAST | 1 | 12-20 | 3/8-1 | 0.530 | 5.5 | 2.4 | HKC-3 |
| 5C70HF-G | Bass/Pike | LEC70HF | 7' | H | FAST | 1 | 14-25 | 3/8-1 1/2 | 0.555 | 6.0 | 2.5 | HKC-3 / HKC-4 |

SC^V GRAPHITE / NSI RESIN CASTING BLANKS (GLOSS BLUE/GREEN FLIP FINISH)



| MODEL | TYPE | EQUIVALENT ST. CROIX ROD MODEL | LENGTH | POWER | ACTION | PCS. | LINE WT. RATING | LURE WT. (OZ.) | BUTT DIAMETER (INCH) | TIP SIZE | BLANK WT. (OZ.) | SUG. HANDLE KIT |
|------------|-----------------|--------------------------------|--------|-------|-----------|------|-----------------|----------------|----------------------|----------|-----------------|-----------------|
| 5C66MF-B | Bass/Walleye | XC66MF | 6'6" | M | FAST | 1 | 10-17 | 1/4-5/8 | 0.460 | 4.5 | 1.8 | HKC-3 |
| 5C68MXF-B | Bass/Walleye | XC/XS68MXF | 6'8" | M | X-FAST | 1 | 8-14 | 1/4-5/8 | 0.465 | 4.5 | 1.7 | HKC-3 / HKS-4 |
| 5C610MXF-B | Shaky Head Bass | XC610MXF | 6'10" | M | X-FAST | 1 | 10-14 | 1/8-5/16 | 0.48 | 4 | 2.3 | HKC-3 |
| 5C70MF-B | Bass/Walleye | XC70MF | 7' | M | FAST | 1 | 10-17 | 1/4-5/8 | 0.465 | 5.0 | 2.0 | HKC-3 |
| 5C72MM-B | Bass/Walleye | XC72MM | 7'2" | M | MODERATE | 1 | 8-14 | 1/4-5/8 | 0.428 | 5.0 | 1.4 | HKC-3 |
| 5C66MHF-B | Bass/Pike | XC66MHF | 6'6" | MH | FAST | 1 | 12-20 | 3/8-1 | 0.520 | 5.0 | 2.2 | HKC-3 |
| 5C70MHF-B | Bass/Pike | XC70MHF | 7' | MH | FAST | 1 | 12-20 | 3/8-1 | 0.530 | 5.5 | 2.4 | HKC-3 |
| 5C72MHM-B | Bass/Walleye | XC72MHM | 7'2" | MH | MODERATE | 1 | 10-20 | 3/8-1 | 0.453 | 5.0 | 1.9 | HKC-3 |
| 5C76MHMF-B | Bass | XC76MHMF | 7'6" | MH | MOD. FAST | 1 | 12-25 | 3/8-1 1/4 | 0.540 | 6.5 | 3.0 | HKC-4 |
| 5C70HF-B | Bass/Pike | XC70HF | 7' | H | FAST | 1 | 14-25 | 3/8-1 1/2 | 0.555 | 6.0 | 2.5 | HKC-3 / HKC-4 |
| 5C711HMF-B | Bass | XC711HMF | 7'11" | H | MOD. FAST | 1 | 14-30 | 1/2-2 | 0.635 | 6.5 | 4.0 | HKC-4 / HKC-5 |

SC^V GRAPHITE / NSI RESIN SALMON/STEELHEAD BLANKS (GLOSS FOREST GREEN PEARL FINISH)



| MODEL | TYPE | EQUIVALENT ST. CROIX ROD MODEL | LENGTH | POWER | ACTION | PCS. | LINE WT. RATING | LURE WT. (OZ.) | BUTT DIAMETER (INCH) | TIP SIZE | BLANK WT. (OZ.) | SUG. HANDLE KIT |
|-------------|------------------|--------------------------------|--------|-------|----------|------|-----------------|----------------|----------------------|----------|-----------------|-----------------|
| 5S90LM2-G | Spinning- Drift | LES90LM2 | 9' | L | MODERATE | 2 | 4-8 | 1/16-3/8 | 0.425 | 4.0 | 2.2 | HKS-6 / HKS-7 |
| 5S96LM2-G | Spinning- Drift | LES96LM2 | 9'6" | L | MODERATE | 2 | 4-8 | 1/16-3/8 | 0.430 | 4.0 | 2.5 | HKS-6 / HKS-7 |
| 5SC90MLF2-G | Spinning/Casting | LES90MLF2 | 9' | ML | FAST | 2 | 6-10 | 1/8-5/8 | 0.445 | 4.0 | 2.4 | HKS-6 / HKC-6 |
| 5SC96MLF2-G | Spinning/Casting | LES96MLF2 | 9'6" | ML | FAST | 2 | 6-10 | 1/8-5/8 | 0.460 | 4.0 | 2.8 | HKS-6 / HKC-6 |
| 5SC86MF2-G | Spinning/Casting | LES86MF2 | 8'6" | M | FAST | 2 | 8-12 | 1/4-3/4 | 0.470 | 4.0 | 2.4 | HKS-6 / HKC-6 |
| 5SC90MF2-G | Spinning/Casting | LES90MF2 | 9' | M | FAST | 2 | 8-12 | 1/4-3/4 | 0.475 | 4.0 | 2.7 | HKS-6 / HKC-6 |
| 5SC96MF2-G | Spinning/Casting | LES96MF2 | 9'6" | M | FAST | 2 | 8-12 | 1/4-3/4 | 0.480 | 4.0 | 3.0 | HKS-6 / HKC-6 |
| 5SC86MHF2-G | Spinning/Casting | LES/LEC86MHF2 | 8'6" | MH | FAST | 2 | 8-17 | 3/8-1 | 0.500 | 4.5 | 2.6 | HKS-6 / HKC-6 |
| 5SC90MHF2-G | Spinning/Casting | LES/LEC90MHF2 | 9' | MH | FAST | 2 | 8-17 | 3/8-1 | 0.515 | 4.5 | 3.0 | HKS-6 / HKC-6 |
| 5SC96MHF2-G | Spinning/Casting | LES/LEC96MHF2 | 9'6" | MH | FAST | 2 | 8-17 | 3/8-1 | 0.520 | 4.5 | 3.5 | HKS-6 / HKC-6 |
| 5SC86HF2-G | Spinning/Casting | LES/LEC86HF2 | 8'6" | H | FAST | 2 | 12-25 | 1/2-2 | 0.545 | 4.5 | 2.9 | HKS-6 / HKC-6 |
| 5SC90HF2-G | Spinning/Casting | LES/LEC90HF2 | 9' | H | FAST | 2 | 12-25 | 1/2-2 | 0.545 | 4.5 | 3.1 | HKS-6 / HKC-6 |
| 5SC96HF2-G | Spinning/Casting | LES/LEC96HF2 | 9'6" | H | FAST | 2 | 12-25 | 1/2-2 | 0.555 | 5.0 | 3.6 | HKS-6 / HKC-6 |

SC^V GRAPHITE CASTING BLANKS (GLOSS COBALT BLUE PEARL FINISH)



| MODEL | TYPE | EQUIVALENT ST. CROIX ROD MODEL | LENGTH | POWER | ACTION | PCS. | LINE WT. RATING | LURE WT. (OZ.) | BUTT DIAMETER (INCH) | TIP SIZE | BLANK WT. (OZ.) | SUG. HANDLE KIT |
|------------|--------------------------------|--------------------------------|--------|-------|-----------|------|-----------------|----------------|----------------------|----------|-----------------|-----------------|
| *4C610MLXF | Drop Shot/Finesse | TBC/TBS610MLXF | 6'10" | ML | X-FAST | 1 | 6-10 | 1/8-1/2 | 0.433 | 4.0 | 2.1 | HKC-3 / HKS-4 |
| *4C68MF | Jerkbait | TBC68MF | 6'8" | M | FAST | 1 | 10-17 | 1/4-5/8 | 0.445 | 5.5 | 1.9 | HKC-3 |
| *4C68MXF | Topwater/Shake-Flick/River Jig | TBC/TBS/LTWS68MXF | 6'8" | M | X-FAST | 1 | 8-14 | 1/4-5/8 | 0.454 | 4.0 | 1.9 | HKC-3 |
| *4C610MXF | Shaky Head | TBC610MXF | 6'10" | M | X-FAST | 1 | 10-17 | 1/4-5/16 | 0.483 | 5.0 | 2.6 | HKC-3 |
| *4C71MF | Plastics | TBC71MF | 7'1" | M | FAST | 1 | 10-17 | 1/4-5/8 | 0.453 | 5.0 | 2.2 | HKC-3 |
| *4C72MM | Small Cranker | TBC72MM | 7'2" | M | MODERATE | 1 | 8-14 | 1/4-5/8 | 0.422 | 4.5 | 1.6 | HKC-3 |
| *4C68MHF | Jig-N-Worm | TBC68MHF | 6'8" | MH | FAST | 1 | 12-20 | 3/8-1 | 0.506 | 5.5 | 2.4 | HKC-3 |
| *4C70MHM | Bounce-N-Troll | LTWC70MHM | 7' | MH | MODERATE | 1 | 6-12 | 1/2-3 | 0.440 | 5.0 | 2.0 | HKC-4 |
| *4C71MHF | Spinner Bait/Jig-N-Worm | TBC71MHF | 7'1" | MH | FAST | 1 | 12-20 | 3/8-1 | 0.515 | 5.5 | 2.7 | HKC-3 |
| *4C71MHXF | Swim Jig Finesse | TBC71MHXF | 7'1" | MH | X-FAST | 1 | 12-20 | 1/4-3/4 | 0.514 | 5.0 | 2.6 | HKC-3 |
| *4C73MHF | Carolina Rig | TBC73MHF | 7'3" | MH | FAST | 1 | 12-25 | 3/8-1 1/4 | 0.527 | 5.5 | 3.0 | HKC-4 |
| *4C76MHMF | Pitchin'/Lite Flippin' | TBC76MHMF | 7'6" | MH | MOD. FAST | 1 | 12-25 | 3/8-11/4 | 0.553 | 5.0 | 3 | HKC-5 |
| *4C78MHM | Big Cranker | TBC78MHM | 7'8" | MH | MODERATE | 1 | 10-20 | 3/8-1 | 0.455 | 5.0 | 2.4 | HKC-5 |
| *4C74HF | Slop-N-Frog/Swim Jig | TBC74HF | 7'4" | H | FAST | 1 | 14-25 | 3/8-11/2 | 0.561 | 6.0 | 3.0 | HKC-4 / HKC-5 |
| *4C79HMF | Punchin' | TBC79HMF | 7'9" | H | MOD. FAST | 1 | 14-30 | 1/2-2 | 0.600 | 5.5 | 3.0 | HKC-4 / HKC-5 |
| *4C710HF | Swim Bait | TBC710HF | 7'10" | H | FAST | 1 | 14-30 | 1-4 | 0.613 | 6.0 | 3.6 | HKC-4 / HKC-5 |
| *4C710HM | Magnum Cranker | TBC710HM | 7'10" | H | MODERATE | 1 | 12-25 | 1/2-1 3/8 | 0.520 | 5.5 | 2.5 | HKC-4 / HKC-5 |
| *4C711HMF | Flippin' | TBC711HMF | 7'11" | H | MOD. FAST | 1 | 14-30 | 1/2-2 | 0.583 | 6.0 | 3.3 | HKC-4 / HKC-5 |
| *4C73XHF | Big Jig | TBC73XHF | 7'3" | XH | FAST | 1 | 17-30 | 1-21/2 | 0.601 | 6.0 | 3.0 | HKC-4 / HKC-5 |

* New for 2012

SC^V GRAPHITE SPINNING BLANKS (GLOSS COBALT BLUE PEARL FINISH)



| MODEL | TYPE | EQUIVALENT ST. CROIX ROD MODEL | LENGTH | POWER | ACTION | PCS. | LINE WT. RATING | LURE WT. (OZ.) | BUTT DIAMETER (INCH) | TIP SIZE | BLANK WT. (OZ.) | SUG. HANDLE KIT |
|------------|---------------|--------------------------------|--------|-------|--------|------|-----------------|----------------|----------------------|----------|-----------------|-----------------|
| *4S70LF | Finesse | LTWS70LF | 7' | L | FAST | 1 | 4-8 | 1/16-1/4 | 0.394 | 4.0 | 1.5 | HKS-4 |
| *4S63MLXF | Vertical Jig | LTWS63MLXF | 6'3" | ML | X-FAST | 1 | 4-8 | 1/16-3/8 | 0.404 | 4.0 | 1.6 | HKS-4 |
| *4S66MLF | Jig-N-Rig | LTWS66MLF | 6'6" | ML | FAST | 1 | 4-10 | 1/8-3/8 | 0.440 | 4.0 | 1.4 | HKS-4 |
| *4S66MLF2 | Jig-N-Rig | LTWS66MLF2 | 6'6" | ML | FAST | 2 | 4-10 | 1/8-3/8 | 0.451 | 4.0 | 1.5 | HKS-4 |
| *4S68MLF | Split Shot | TBS68MLF | 6'8" | ML | FAST | 1 | 4-10 | 1/8-3/8 | 0.445 | 4.0 | 1.5 | HKS-5 |
| *4S70MLF | Riggin' | LTWS70MLF | 7' | ML | FAST | 1 | 4-10 | 1/8-3/8 | 0.466 | 4.0 | 1.5 | HKS-5 |
| *4S70MLF2 | Riggin' | LTWS70MLF2 | 7' | ML | FAST | 2 | 4-10 | 1/8-3/8 | 0.454 | 4.0 | 1.7 | HKS-5 |
| *4S76MLXF | Slip-N-Rig | LTWS76MLXF | 7'6" | ML | X-FAST | 1 | 4-10 | 1/8-3/8 | 0.484 | 4.0 | 1.9 | HKS-5 |
| *4S76MLXF2 | Slip-N-Rig | LTWS76MLXF2 | 7'6" | ML | X-FAST | 2 | 4-10 | 1/8-3/8 | 0.457 | 4.0 | 2.0 | HKS-5 |
| *4S80MLF2 | Drift-N-Float | LTWS80MLF2 | 8' | ML | FAST | 2 | 4-10 | 1/8-3/8 | 0.422 | 4.5 | 1.8 | HKS-5 |
| *4S59MXF | Classic Jig | LTWS59MXF | 5'9" | M | X-FAST | 1 | 6-10 | 1/8-1/2 | 0.415 | 4.0 | 1.2 | HKS-4 |
| *4S510MXF | Skippin' | TBS510MXF | 5'10" | M | X-FAST | 1 | 8-12 | 3/16-5/8 | 0.419 | 4.0 | 1.4 | HKS-4 |
| *4S63MXF | Vertical Jig | LTWS63MXF | 6'3" | M | X-FAST | 1 | 6-10 | 1/8-1/2 | 0.435 | 4.5 | 1.4 | HKS-4 |
| *4S610MXF | Shaky Head | TBS610MXF | 6'10" | M | X-FAST | 1 | 6-12 | 1/8-5/16 | 0.474 | 4.5 | 2.3 | HKS-5 |
| *4S71MF | Plastics | TBS71MF | 7'1" | M | FAST | 1 | 6-12 | 3/16-5/8 | 0.453 | 5.5 | 2.1 | HKS-5 |
| *4S71MHF | Power Spin | TBS71MHF | 7'1" | MH | FAST | 1 | 8-14 | 3/8-3/4 | 0.513 | 5.5 | 2.6 | HKS-6 |

* New for 2012

SC^{IV} GRAPHITE MUSKY BLANKS (GLOSS COBALT BLUE PEARL FINISH)



| MODEL | TYPE | EQUIVALENT ST. CROIX ROD MODEL | LENGTH | POWER | ACTION | PCS. | LINE WT. RATING | LURE WT. (OZ.) | BUTT DIAMETER (INCH) | TIP SIZE | BLANK WT. (OZ.) | SUG. HANDLE KIT |
|-----------|-------------------------------------|--------------------------------|--------|-------|-----------|------|-----------------|----------------|----------------------|----------|-----------------|-----------------|
| * 4M73MHF | Downsizer- Small Baits | LTMU/TMU73MHF | 7'3" | MH | FAST | 1 | 30-50 | 3/4-2 1/2 | 0.595 | 6.5 | 3.5 | HKC-7 |
| * 4M80MHF | Top-N-Tail- Topwater & Bucktails | LTMU/TMU80MHF | 8' | MH | FAST | 1 | 30-50 | 3/4-3 | 0.595 | 7.5 | 3.9 | HKC-8 |
| * 4M86MHF | Long Ranger- Topwater & Bucktails | LTMU/TMU86MHF | 8'6" | MH | FAST | 1 | 30-50 | 3/4-3 | 0.600 | 7.5 | 4.2 | HKC-8 |
| * 4M79HMF | Lip Stick- Large Crankbaits | LTMU/TMU79HMF | 7'9" | H | MOD. FAST | 1 | 30-65 | 2-6 | 0.589 | 7.5 | 3.9 | HKC-8 |
| * 4M86HF | Sling Blade- Large Bucktails | LTMU/TMU86HF | 8'6" | H | FAST | 1 | 40-65 | 2-6 | 0.645 | 7.0 | 5.7 | HKC-8 |
| * 4M90HF | Big Nasty- Large Bucktails & Rubber | LTMU/TMU90HF | 9' | H | FAST | 1 | 50-80 | 3-8 | 0.657 | 7.5 | 6.9 | HKC-8 |
| * 4M69XHF | Classic Jerk- Jerkbait | LTMU/TMU69XHF | 6'9" | XH | FAST | 1 | 50-80 | 3-8 | 0.645 | 9.0 | 3.5 | HKC-7 |
| * 4M76XHF | The Jerk- Jerkbait | LTMU/TMU76XHF | 7'6" | XH | FAST | 1 | 50-80 | 3-8 | 0.655 | 9.0 | 4.8 | HKC-8 |
| * 4M86XHF | Big Dawg- Large Wood & Plastic | LTMU/TMU86XHF | 8'6" | XH | FAST | 1 | 50-80 | 4-12 | 0.670 | 9.0 | 5.8 | HKC-8 |

* New for 2012

SC^{III} GRAPHITE SPINNING BLANKS (CARBON PEARL FINISH)



| MODEL | TYPE | EQUIVALENT ST. CROIX ROD MODEL | LENGTH | POWER | ACTION | PCS. | LINE WT. RATING | LURE WT. (OZ.) | BUTT DIAMETER (INCH) | TIP SIZE | BLANK WT. (OZ.) | SUG. HANDLE KIT |
|-----------|-----------------------|--------------------------------|--------|-------|----------|------|-----------------|----------------|----------------------|----------|-----------------|-----------------|
| 3S46ULF | Trout/Panfish | AVS46ULF | 4'6" | UL | FAST | 1 | 2-6 | 1/32-3/16 | 0.275 | 3.5 | 0.4 | HKS-1 |
| 3S50ULF | Trout/Panfish | AVS50ULF | 5' | UL | FAST | 1 | 2-6 | 1/32-3/16 | 0.305 | 4.0 | 0.6 | HKS-1 |
| 3S56ULF2 | Trout/Panfish | AVS56ULF2 | 5'6" | UL | FAST | 2 | 2-6 | 1/32-3/16 | 0.275 | 4.0 | 0.7 | HKS-1 |
| 3S60ULF | Trout/Panfish | AVS60ULF | 6' | UL | FAST | 1 | 2-6 | 1/32-3/16 | 0.325 | 3.5 | 0.8 | HKS-2 |
| 3S60ULF2 | Trout/Panfish | AVS60ULF2 | 6' | UL | FAST | 2 | 2-6 | 1/32-3/16 | 0.285 | 4.0 | 0.8 | HKS-2 |
| 3S66ULF | Trout/Panfish | AVS66ULF | 6'6" | UL | FAST | 1 | 2-6 | 1/32-3/16 | 0.330 | 3.5 | 0.9 | HKS-2 |
| 3S66ULF2 | Trout/Panfish | AVS66ULF2 | 6'6" | UL | FAST | 2 | 2-6 | 1/32-3/16 | 0.320 | 4.0 | 1.0 | HKS-2 |
| 3S70ULF | Trout/Panfish | AVS70ULF | 7' | UL | FAST | 1 | 2-6 | 1/32-3/16 | 0.350 | 4.0 | 1.6 | HKS-2 |
| 3S70ULM2 | Trout/Panfish | AVS70ULM2 | 7' | UL | MODERATE | 2 | 2-6 | 1/32-3/16 | 0.310 | 4.0 | 1.5 | HKS-2 |
| 3S60LF | Trout/Panfish/Walleye | AVS60LF | 6' | L | FAST | 1 | 4-8 | 1/16-1/4 | 0.330 | 4.0 | 1.0 | HKS-2 |
| 3S66LF | Trout/Panfish/Walleye | AVS66LF | 6'6" | L | FAST | 1 | 4-8 | 1/16-1/4 | 0.350 | 3.5 | 1.2 | HKS-2 |
| 3S66LF2 | Trout/Panfish/Walleye | AVS66LF2 | 6'6" | L | FAST | 2 | 4-8 | 1/16-1/4 | 0.335 | 4.0 | 1.1 | HKS-2 |
| 3S60MLF | Bass/Walleye | AVS60MLF | 6' | ML | FAST | 1 | 4-10 | 1/8-3/8 | 0.385 | 4.5 | 1.3 | HKS-3 |
| 3S63MLXF | Bass/Walleye | AVS63MLXF | 6'3" | ML | X-FAST | 1 | 4-8 | 1/16-3/8 | 0.405 | 4.0 | 1.6 | HKS-3 |
| 3S66MLF | Bass/Walleye | AVS66MLF | 6'6" | ML | FAST | 1 | 4-10 | 1/8-3/8 | 0.400 | 4.5 | 1.5 | HKS-4 |
| 3S66MLF2 | Bass/Walleye | AVS66MLF2 | 6'6" | ML | FAST | 2 | 4-10 | 1/8-3/8 | 0.415 | 4.5 | 1.6 | HKS-4 |
| 3S69MLXF | Drop Shot Bass | AVS69MLXF | 6'9" | ML | X-FAST | 1 | 6-10 | 1/8-3/8 | 0.400 | 4.0 | 1.7 | HKS-4 |
| 3S70MLF | Bass/Walleye | AVS70MLF | 7' | ML | FAST | 1 | 4-10 | 1/8-3/8 | 0.410 | 4.5 | 1.8 | HKS-4 / HKS-5 |
| 3S70MLF2 | Bass/Walleye | AVS70MLF2 | 7' | ML | FAST | 2 | 4-10 | 1/8-3/8 | 0.420 | 4.0 | 1.8 | HKS-4 / HKS-5 |
| 3S76MLXF | Walleye | AVS76MLXF | 7'6" | ML | X-FAST | 1 | 4-10 | 1/8-3/8 | 0.420 | 4.0 | 2.0 | HKS-5 |
| 3S76MLXF2 | Walleye | AVS76MLXF2 | 7'6" | ML | X-FAST | 2 | 4-10 | 1/8-3/8 | 0.430 | 4.0 | 2.0 | HKS-5 |
| 3S80MLM2 | Float-N-Fly Bass | AVS80MLM2 | 8' | ML | MODERATE | 2 | 4-8 | 1/16-5/16 | 0.400 | 4.5 | 1.7 | HKS-5 / HKS-9 |
| 3S59MXF | Bass/Walleye | AVS59MXF | 5'9" | M | X-FAST | 1 | 6-10 | 1/8-1/2 | 0.485 | 4.5 | 1.4 | HKS-3 |
| 3S60MF | Bass/Walleye | AVS60MF | 6' | M | FAST | 1 | 6-12 | 3/16-5/8 | 0.465 | 5.0 | 1.4 | HKS-3 |
| 3S63MXF | Bass/Walleye | AVS63MXF | 6'3" | M | X-FAST | 1 | 6-10 | 1/8-1/2 | 0.505 | 4.5 | 1.7 | HKS-3 |
| 3S66MF | Bass/Walleye | AVS66MF | 6'6" | M | FAST | 1 | 6-12 | 3/16-5/8 | 0.500 | 5.0 | 1.6 | HKS-4 |
| 3S66MF2 | Bass/Walleye | AVS66MF2 | 6'6" | M | FAST | 2 | 6-12 | 3/16-5/8 | 0.515 | 4.0 | 1.8 | HKS-4 |
| 3S68MXF | Bass/Walleye | AVS68MXF | 6'8" | M | X-FAST | 1 | 6-12 | 3/16-5/8 | 0.515 | 4.5 | 1.9 | HKS-4 |
| 3S70MF | Bass/Walleye | AVS70MF | 7' | M | FAST | 1 | 6-12 | 3/16-5/8 | 0.510 | 4.5 | 1.9 | HKS-5 |
| 3S70MF2 | Bass/Walleye | AVS70MF2 | 7' | M | FAST | 2 | 6-12 | 3/16-5/8 | 0.530 | 4.0 | 1.9 | HKS-5 |
| 3S66MHF | Bass/Pike | AVS66MHF | 6'6" | MH | FAST | 1 | 8-14 | 3/8-3/4 | 0.510 | 5.5 | 1.9 | HKS-4 / HKS-5 |
| 3S66MHF2 | Bass/Pike | AVS66MHF2 | 6'6" | MH | FAST | 2 | 8-14 | 3/8-3/4 | 0.525 | 4.5 | 2.0 | HKS-4 / HKS-5 |
| 3S70MHF | Bass/Pike | AVS70MHF | 7' | MH | FAST | 1 | 8-14 | 3/8-3/4 | 0.530 | 6.0 | 2.3 | HKS-5 |

SC^{III} GRAPHITE SPINNING BLANKS (FUCHSIA METALLIC FINISH)



| MODEL | TYPE | EQUIVALENT ST. CROIX ROD MODEL | LENGTH | POWER | ACTION | PCS. | LINE WT. RATING | LURE WT. (OZ.) | BUTT DIAMETER (INCH) | TIP SIZE | BLANK WT. (OZ.) | SUG. HANDLE KIT |
|------------|-----------------------|--------------------------------|--------|-------|--------|------|-----------------|----------------|----------------------|----------|-----------------|-----------------|
| 3S60LF-F | Trout/Panfish/Walleye | APS60LF | 6' | L | FAST | 1 | 4-8 | 1/16-1/4 | 0.330 | 4.0 | 1.0 | HKS-2 |
| 3S63MLXF-F | Bass/Walleye | APS63MLXF | 6'3" | ML | X-FAST | 1 | 4-8 | 1/16-3/8 | 0.405 | 4.0 | 1.6 | HKS-3 |
| 3S66MLF-F | Bass/Walleye | APS66MLF | 6'6" | ML | FAST | 1 | 4-10 | 1/8-3/8 | 0.400 | 4.5 | 1.5 | HKS-4 |
| 3S66MLF2-F | Bass/Walleye | APS66MLF2 | 6'6" | ML | FAST | 2 | 4-10 | 1/8-3/8 | 0.415 | 4.5 | 1.6 | HKS-4 |
| 3S68MXF-F | Bass/Walleye | APS68MXF | 6'8" | M | X-FAST | 1 | 6-12 | 3/16-5/8 | 0.515 | 4.5 | 1.9 | HKS-4 |
| 3S70MF-F | Bass/Walleye | APS70MF | 7' | M | FAST | 1 | 6-12 | 3/16-5/8 | 0.510 | 4.5 | 1.9 | HKS-5 |

SC^{III} GRAPHITE CASTING BLANKS (CARBON PEARL FINISH)



| MODEL | TYPE | EQUIVALENT ST. CROIX ROD MODEL | LENGTH | POWER | ACTION | PCS. | LINE WT. RATING | LURE WT. (OZ.) | BUTT DIAMETER (INCH) | TIP SIZE | BLANK WT. (OZ.) | SUG. HANDLE KIT |
|----------|------------------------|--------------------------------|--------|-------|------------------|------|-----------------|----------------|----------------------|----------|-----------------|-----------------|
| 3C66MLF | Bass/Walleye | AVC66MLF | 6'6" | ML | FAST | 1 | 8-12 | 3/16-1/2 | 0.410 | 5.0 | 1.7 | HKC-3 |
| 3C69MLXF | Drop Shot Bass | AVC69MLXF | 6'9" | ML | X-FAST | 1 | 6-10 | 1/8-1/2 | 0.410 | 4.0 | 1.8 | HKC-3 |
| 3C60MF | Bass | AVC60MF | 6' | M | FAST | 1 | 10-17 | 1/4-5/8 | 0.475 | 5.5 | 1.6 | HKC-2 |
| 3C62MXF | Bass/Walleye | AVC62MXF | 6'2" | M | X-FAST | 1 | 8-14 | 1/4-5/8 | 0.505 | 4.5 | 1.7 | HKC-2 |
| 3C66MF | Bass | AVC66MF | 6'6" | M | FAST | 1 | 10-17 | 1/4-5/8 | 0.505 | 5.5 | 1.8 | HKC-3 |
| 3C66MM | Crankbait Bass/Walleye | AVC66MM | 6'6" | M | MODERATE | 1 | 8-14 | 1/4-5/8 | 0.405 | 4.5 | 1.3 | HKC-3 |
| 3C68MXF | Bass/Walleye | AVC68MXF | 6'8" | M | X-FAST | 1 | 8-14 | 1/4-5/8 | 0.520 | 4.5 | 2.0 | HKC-3 |
| 3C70MF | Bass | AVC70MF | 7' | M | FAST | 1 | 10-17 | 1/4-5/8 | 0.515 | 5.5 | 2.0 | HKC-3 |
| 3C70MM | Crankbait Bass/Walleye | AVC70MM | 7' | M | MODERATE | 1 | 8-14 | 1/4-5/8 | 0.420 | 4.5 | 1.4 | HKC-3 |
| 3C60MHF | Bass/Pike/Saltwater | AVC60MHF | 6' | MH | FAST | 1 | 12-20 | 3/8-1 | 0.515 | 5.5 | 2.0 | HKC-2 |
| 3C66MHF | Bass/Pike/Saltwater | AVC66MHF | 6'6" | MH | FAST | 1 | 12-20 | 3/8-1 | 0.525 | 6.5 | 2.3 | HKC-3 |
| 3C66MHM | Crankbait Bass | AVC66MHM | 6'6" | MH | MODERATE | 1 | 10-20 | 3/8-1 | 0.430 | 5.0 | 1.7 | HKC-3 |
| 3C70MHF | Bass/Pike/Saltwater | AVC70MHF | 7' | MH | FAST | 1 | 12-20 | 3/8-1 | 0.535 | 6.5 | 2.6 | HKC-3 |
| 3C70MHM | Crankbait Bass | AVC70MHM | 7' | MH | MODERATE | 1 | 10-20 | 3/8-1 | 0.440 | 5.0 | 1.9 | HKC-3 |
| 3C70MHXF | Bass | AVC70MHXF | 7' | MH | X-FAST | 1 | 12-17 | 5/16-3/4 | 0.535 | 5.0 | 2.6 | HKC-3 |
| 3C76MHMF | Flippin'/Pitchin' Bass | AVC76MHMF | 7'6" | MH | MOD. FAST | 1 | 12-25 | 3/8-1 1/4 | 0.560 | 6.0 | 3.3 | HKC-4 |
| 3C66HF | Bass/Pike/Saltwater | AVC66HF | 6'6" | H | FAST | 1 | 14-25 | 3/8-1 1/2 | 0.550 | 6.0 | 2.5 | HKC-3 |
| 3C70HF | Bass/Pike/Saltwater | AVC70HF | 7' | H | FAST | 1 | 14-25 | 3/8-1 1/2 | 0.565 | 7.0 | 2.7 | HKC-4 |
| 3C70HM | Crankbait Bass | AVC70HM | 7' | H | MODERATE | 1 | 12-25 | 1/2-1 3/8 | 0.465 | 6.5 | 2.5 | HKC-3 |
| 3C710HMF | Flippin' Bass | AVC710HMF | 7'10" | H | MOD. FAST 1-TEL. | 1 | 14-30 | 1/2-2 | 0.645 | 7.5 | 4.1 | HKC-4 |

SC^{III} GRAPHITE CASTING BLANKS (FUCHSIA METALLIC FINISH)



| MODEL | TYPE | EQUIVALENT ST. CROIX ROD MODEL | LENGTH | POWER | ACTION | PCS. | LINE WT. RATING | LURE WT. (OZ.) | BUTT DIAMETER (INCH) | TIP SIZE | BLANK WT. (OZ.) | SUG. HANDLE KIT |
|-----------|---------------------|--------------------------------|--------|-------|--------|------|-----------------|----------------|----------------------|----------|-----------------|-----------------|
| 3C66MF-F | Bass | APC66MF | 6'6" | M | FAST | 1 | 10-17 | 1/4-5/8 | 0.505 | 5.5 | 1.8 | HKC-3 |
| 3C68MXF-F | Bass | APC68MXF | 6'8" | M | X-FAST | 1 | 8-14 | 1/4-5/8 | 0.520 | 4.5 | 2.0 | HKC-3 |
| 3C70MF-F | Bass | APC70MF | 7' | M | FAST | 1 | 10-17 | 1/4-5/8 | 0.515 | 5.5 | 2.0 | HKC-3 |
| 3C66MHF-F | Bass/Pike/Saltwater | APC66MHF | 6'6" | MH | FAST | 1 | 12-20 | 3/8-1 | 0.525 | 6.5 | 2.3 | HKC-3 |

SC^{III} GRAPHITE SALMON/STEELHEAD BLANKS (CARBON PEARL FINISH)



| MODEL | TYPE | EQUIVALENT ST. CROIX ROD MODEL | LENGTH | POWER | ACTION | PCS. | LINE WT. RATING | LURE WT. (OZ.) | BUTT DIAMETER (INCH) | TIP SIZE | BLANK WT. (OZ.) | SUG. HANDLE KIT |
|------------|------------------|--------------------------------|--------|-------|----------|------|-----------------|----------------|----------------------|----------|-----------------|-----------------|
| 3S106ULS2 | Spinning- Noodle | AVS106ULS2 | 10'6" | UL | SLOW | 2 | 2-6 | 1/16-1/4 | 0.415 | 4.0 | 2.0 | HKS-6 / HKS-7 |
| 3S90LM2 | Spinning- Drift | AVS90LM2 | 9' | L | MODERATE | 2 | 4-8 | 1/16-3/8 | 0.440 | 4.0 | 2.5 | HKS-6 / HKS-7 |
| 3S96LM2 | Spinning- Drift | AVS96LM2 | 9'6" | L | MODERATE | 2 | 4-8 | 1/16-3/8 | 0.445 | 4.0 | 2.7 | HKS-6 / HKS-7 |
| 3S110LM2 | Spinning- Drift | AVS110LM2 | 11' | L | MODERATE | 2 | 4-8 | 1/16-3/8 | 0.445 | 5.0 | 2.6 | HKS-6 / HKS-9 |
| 3SC90MLF2 | Spinning/Casting | AVS/AVC90MLF2 | 9' | ML | FAST | 2 | 6-10 | 1/8-5/8 | 0.460 | 4.0 | 2.6 | HKS-6 / HKC-6 |
| 3SC96MLF2 | Spinning/Casting | AVS/AVC96MLF2 | 9'6" | ML | FAST | 2 | 6-10 | 1/8-5/8 | 0.470 | 4.0 | 3.0 | HKS-6 / HKC-6 |
| 3SC106MLF2 | Spinning/Casting | AVS/AVC106MLF2 | 10'6" | ML | FAST | 2 | 6-10 | 1/8-5/8 | 0.475 | 4.0 | 3.4 | HKS-6 / HKC-6 |
| 3CP130MLM2 | Center Pin | AVS130MLM2 | 13' | ML | MODERATE | 2 | 6-10 | 1/4-5/8 | 0.500 | 4.0 | 3.5 | HKS-9 |
| 3CP150MLM3 | Center Pin | AVS150MLM3 | 15' | ML | MODERATE | 3 | 6-10 | 1/4-5/8 | 0.580 | 4.0 | 4.3 | HKS-9 |
| 3SC86MF2 | Spinning/Casting | AVS/AVC86MF2 | 8'6" | M | FAST | 2 | 8-12 | 1/4-3/4 | 0.480 | 4.5 | 2.6 | HKS-6 / HKC-6 |
| 3SC90MF2 | Spinning/Casting | AVS/AVC90MF2 | 9' | M | FAST | 2 | 8-12 | 1/4-3/4 | 0.485 | 4.5 | 2.9 | HKS-6 / HKC-6 |
| 3SC96MF2 | Spinning/Casting | AVS/AVC96MF2 | 9'6" | M | FAST | 2 | 8-12 | 1/4-3/4 | 0.495 | 4.5 | 3.2 | HKS-6 / HKC-6 |
| 3SC106MF2 | Spinning/Casting | AVS/AVC106MF2 | 10'6" | M | FAST | 2 | 8-12 | 1/4-3/4 | 0.515 | 4.5 | 4.0 | HKS-6 / HKC-6 |
| 3SC86MHF2 | Spinning/Casting | AVS/AVC86MHF2 | 8'6" | MH | FAST | 2 | 8-17 | 3/8-1 | 0.515 | 5.0 | 2.9 | HKS-6 / HKC-6 |
| 3SC90MHF2 | Spinning/Casting | AVS/AVC90MHF2 | 9' | MH | FAST | 2 | 8-17 | 3/8-1 | 0.525 | 5.0 | 3.2 | HKS-6 / HKC-6 |
| 3SC96MHF2 | Spinning/Casting | AVS/AVC96MHF2 | 9'6" | MH | FAST | 2 | 8-17 | 3/8-1 | 0.535 | 5.0 | 3.4 | HKS-6 / HKC-6 |
| 3SC86HF2 | Spinning/Casting | AVS/AVC86HF2 | 8'6" | H | FAST | 2 | 12-25 | 1/2-2 | 0.600 | 5.5 | 3.2 | HKS-6 / HKC-6 |
| 3SC90HF2 | Spinning/Casting | AVS/AVC90HF2 | 9' | H | FAST | 2 | 12-25 | 1/2-2 | 0.550 | 5.0 | 3.3 | HKS-6 / HKC-6 |
| 3C90HM2 | Casting | AVC90HM2 | 9' | H | MODERATE | 2 | 12-25 | 1/2-2 | 0.555 | 5.0 | 3.5 | HKC-6 |
| 3SC96HF2 | Spinning/Casting | AVS/AVC96HF2 | 9'6" | H | FAST | 2 | 12-25 | 1/2-2 | 0.570 | 5.0 | 3.6 | HKS-6 / HKC-6 |
| 3C106HM2 | Casting | AVC106HM2 | 10'6" | H | MODERATE | 2 | 12-25 | 1/2-2 | 0.550 | 5.0 | 3.9 | HKC-6 |

SC^{III} GRAPHITE CARP BLANKS (CARBON PEARL FINISH)



| MODEL | TYPE | EQUIVALENT ST. CROIX ROD MODEL | LENGTH | POWER | ACTION | PCS. | LINE WT. RATING | LURE WT. (OZ.) | BUTT DIAMETER (INCH) | TIP SIZE | BLANK WT. (OZ.) | SUG. HANDLE KIT |
|-------------|----------|--------------------------------|--------|-------|-----------|------|-----------------|----------------|----------------------|----------|-----------------|-----------------|
| 3CS96MMF2 | Spinning | ACS96MMF2 | 9'6" | M | MOD. FAST | 2 | 8-25 | 1/2-3 | 0.572 | 5.5 | 3.9 | HKS-9 |
| 3CS120MHMF2 | Spinning | ACS120MHMF2 | 12' | MH | MOD. FAST | 2 | 8-25 | 1/2-4 | 0.614 | 6.5 | 7.5 | HKS-9 |

5C11 GRAPHITE SPINNING BLANKS (GLOSS BLACK PEARL FINISH)

| MODEL | TYPE | EQUIVALENT ST. CROIX ROD MODEL | LENGTH | POWER | ACTION | PCS. | LINE WT. RATING | LURE WT. (OZ.) | BUTT DIAMETER (INCH) | TIP SIZE | BLANK WT. (OZ.) | SUG. HANDLE KIT |
|----------|------------------------|--------------------------------------|--------|-------|----------|------|--------------------|----------------|----------------------------|-------------|--------------------|-----------------------|
| 2S46ULM | Trout/Panfish | PS46ULM | 4'6" | UL | MODERATE | 1 | 2-6 | 1/16-1/4 | 0.265 | 4.0 | 0.5 | HKS-1 |
| 2S50ULM | Trout/Panfish | PS50ULM | 5' | UL | MODERATE | 1 | 2-6 | 1/16-1/4 | 0.280 | 4.0 | 0.6 | HKS-1 |
| 2S56ULF2 | Trout/Panfish | PS56ULF2 | 5'6" | UL | FAST | 2 | 2-6 | 1/32-3/16 | 0.280 | 4.0 | 0.7 | HKS-1 |
| 2S60ULF | Trout/Panfish | PS60ULF | 6' | UL | FAST | 1 | 2-6 | 1/32-3/16 | 0.305 | 4.0 | 0.8 | HKS-2 |
| 2S60ULF2 | Trout/Panfish | PS60ULF2 | 6' | UL | FAST | 2 | 2-6 | 1/32-3/16 | 0.285 | 4.5 | 0.9 | HKS-2 |
| 2S66ULF | Trout/Panfish | PS66ULF | 6'6" | UL | FAST | 1 | 2-6 | 1/32-3/16 | 0.315 | 4.0 | 1.0 | HKS-2 |
| 2S66ULF2 | Trout/Panfish | PS66ULF2 | 6'6" | UL | FAST | 2 | 2-6 | 1/32-3/16 | 0.310 | 4.5 | 1.1 | HKS-2 |
| 2S70ULF2 | Trout/Panfish | PS70ULF2 | 7' | UL | FAST | 2 | 2-6 | 1/32-3/16 | 0.320 | 4.5 | 1.1 | HKS-2 |
| 2S56LF | Trout/Walleye/Panfish | PS56LF | 5'6" | L | FAST | 1 | 4-8 | 1/16-5/16 | 0.315 | 4.5 | 0.8 | HKS-1 |
| 2S60LF | Trout/Walleye/Panfish | PS60LF | 6' | L | FAST | 1 | 4-8 | 1/16-5/16 | 0.330 | 4.5 | 1.0 | HKS-2 |
| 2S60LF4 | Trout/Walleye/Panfish | PS60LF4 | 6' | L | FAST | 4 | 4-8 | 1/16-5/16 | 0.310 | 4.0 | 1.1 | HKS-2 |
| 2S66LF | Trout/Walleye/Panfish | PS66LF | 6'6" | L | FAST | 1 | 4-8 | 1/16-5/16 | 0.345 | 4.5 | 1.2 | HKS-2 |
| 2S66LF2 | Trout/Walleye/Panfish | PS66LF2 | 6'6" | L | FAST | 2 | 4-8 | 1/16-5/16 | 0.335 | 4.5 | 1.3 | HKS-2 |
| 2S86LM2 | Float-N-Fly | PS86LM2 | 8'6" | L | MODERATE | 2 | 4-8 | 1/16-5/16 | 0.385 | 4.5 | 1.7 | HKS-6 |
| 2S60MLF | Bass/Walleye | PS60MLF | 6' | ML | FAST | 1 | 4-10 | 1/8-1/2 | 0.390 | 5.0 | 1.4 | HKS-3 |
| 2S60MLF2 | Bass/Walleye | PS60MLF2 | 6' | ML | FAST | 2 | 4-10 | 1/8-1/2 | 0.445 | 4.5 | 1.7 | HKS-3 |
| 2S66MLF | Bass/Walleye | PS66MLF | 6'6" | ML | FAST | 1 | 4-10 | 1/8-1/2 | 0.395 | 4.5 | 1.6 | HKS-4 |
| 2S66MLF2 | Bass/Walleye | PS66MLF2 | 6'6" | ML | FAST | 2 | 4-10 | 1/8-1/2 | 0.410 | 4.5 | 1.5 | HKS-4 |
| 2S66MLF3 | Bass/Walleye | PS66MLF3 | 6'6" | ML | FAST | 3 | 4-10 | 1/8-1/2 | 0.470 | 4.0 | 2.0 | HKS-4 |
| 2S70MLF | Bass/Walleye | PS70MLF | 7' | ML | FAST | 1 | 4-10 | 1/8-1/2 | 0.435 | 5.0 | 1.8 | HKS-4 / HKS-5 |
| 2S70MLF2 | Bass/Walleye | PS70MLF2 | 7' | ML | FAST | 2 | 4-10 | 1/8-1/2 | 0.485 | 4.5 | 1.9 | HKS-4 / HKS-5 |
| 2S76MLF | Bass/Walleye | PS76MLF | 7'6" | ML | FAST | 1 | 4-10 | 1/8-1/2 | 0.450 | 4.5 | 2.1 | HKS-5 |
| 2S56MF | Bass/Walleye | PS56MF | 5'6" | M | FAST | 1 | 6-12 | 1/4-5/8 | 0.440 | 5.5 | 1.1 | HKS-1 |
| 2S60MF | Bass/Walleye | PS60MF | 6' | M | FAST | 1 | 6-12 | 1/4-5/8 | 0.465 | 5.0 | 1.4 | HKS-3 |
| 2S60MF2 | Bass/Walleye/Pike | PS60MF2 | 6' | M | FAST | 2 | 6-12 | 1/4-5/8 | 0.475 | 4.5 | 1.5 | HKS-3 |
| 2S66MF | Bass/Walleye/Pike | PS66MF | 6'6" | M | FAST | 1 | 6-12 | 1/4-5/8 | 0.495 | 5.0 | 1.6 | HKS-4 |
| 2S66MF2 | Bass/Walleye/Pike | PS66MF2 | 6'6" | M | FAST | 2 | 6-12 | 1/4-5/8 | 0.530 | 4.5 | 1.8 | HKS-4 |
| 2S70MF | Bass/Walleye/Pike | PS70MF | 7' | M | FAST | 1 | 6-12 | 1/4-5/8 | 0.505 | 5.0 | 1.8 | HKS-5 |
| 2S70MF2 | Bass/Walleye/Pike | PS70MF2 | 7' | M | FAST | 2 | 6-12 | 1/4-5/8 | 0.555 | 4.5 | 2.0 | HKS-5 |
| 2S70MF3 | Bass/Walleye/Saltwater | PS70MF3 | 7' | M | FAST | 3 | 6-12 | 1/4-5/8 | 0.535 | 4.5 | 2.3 | HKS-5 |
| 2S60MHF | Bass/Pike/Saltwater | PS60MHF | 6' | MH | FAST | 1 | 8-14 | 3/8-3/4 | 0.475 | 6.0 | 1.7 | HKS-4 |
| 2S66MHF | Bass/Pike/Saltwater | PS66MHF | 6'6" | MH | FAST | 1 | 8-14 | 3/8-3/4 | 0.510 | 6.0 | 1.9 | HKS-5 |
| 2S66MHF2 | Bass/Pike/Saltwater | PS66MHF2 | 6'6" | MH | FAST | 2 | 8-17 | 1/2-1 | 0.540 | 5.0 | 2.1 | HKS-5 |
| 2S70MHF | Bass/Pike/Saltwater | PS70MHF | 7' | MH | FAST | 1 | 8-14 | 3/8-3/4 | 0.520 | 6.0 | 2.2 | HKS-5 |
| 2S70HF | Bass/Pike/Saltwater | PS70HF | 7' | H | FAST | 1 | 10-20 | 1/2-1-1/2 | 0.540 | 6.0 | 2.9 | HKS-6 |
| 2S70HF2 | Bass/Pike/Saltwater | PS70HF2 | 7' | H | FAST | 2 | 10-20 | 1/2-1-1/2 | 0.570 | 5.0 | 3.1 | HKS-6 |
| 2S70XHF | Musky/Pike/Saltwater | PS70XHF | 7' | XH | FAST | 1 | 12-25 | 3/4-2 | 0.580 | 7.0 | 3.3 | HKS-6 |

5C11 GRAPHITE CASTING BLANKS (GLOSS BLACK PEARL FINISH)

| MODEL | TYPE | EQUIVALENT ST. CROIX ROD MODEL | LENGTH | POWER | ACTION | PCS. | LINE WT. RATING | LURE WT. (OZ.) | BUTT DIAMETER (INCH) | TIP SIZE | BLANK WT. (OZ.) | SUG. HANDLE KIT |
|----------|---------------------|--------------------------------------|--------|-------|-----------|------|--------------------|----------------|----------------------------|-------------|--------------------|-----------------------|
| 2C76LM | Trout Trolling | PC76LM | 7'6" | L | MODERATE | 1 | 4-10 | 1/16-3/8 | 0.445 | 4.5 | 2.2 | HKC-4 |
| 2C60MLF2 | Bass/Walleye | PC60MLF2 | 6' | ML | FAST | 2 | 4-10 | 1/8-1/2 | 0.425 | 5.0 | 1.5 | HKC-2 |
| 2C66MLF | Bass/Walleye | PC66MLF | 6'6" | ML | FAST | 1 | 8-14 | 3/16-5/8 | 0.415 | 5.5 | 2.0 | HKC-3 |
| 2C70MLF | Bass/Walleye | PC70MLF | 7' | ML | FAST | 1 | 8-14 | 3/16-5/8 | 0.450 | 5.5 | 2.1 | HKC-3 |
| 2C56MF | Bass | PC56MF | 5'6" | M | FAST | 1 | 8-14 | 1/4-5/8 | 0.450 | 5.5 | 1.3 | HKC-1 |
| 2C60MF | Bass/Walleye/Pike | PC60MF | 6' | M | FAST | 1 | 10-17 | 1/4-3/4 | 0.480 | 5.5 | 1.6 | HKC-2 |
| 2C66MF | Bass/Walleye/Pike | PC66MF | 6'6" | M | FAST | 1 | 10-17 | 1/4-3/4 | 0.510 | 6.0 | 2.0 | HKC-3 |
| 2C66MF2 | Bass/Walleye/Pike | PC66MF2 | 6'6" | M | FAST | 2 | 10-17 | 1/4-3/4 | 0.535 | 4.5 | 1.9 | HKC-3 |
| 2C66MM | Crankbait | PC66MM | 6'6" | M | MODERATE | 1 | 8-14 | 1/4-5/8 | 0.420 | 5.0 | 1.4 | HKC-3 |
| 2C70MF | Bass/Walleye/Pike | PC70MF | 7' | M | FAST | 1 | 10-17 | 1/4-3/4 | 0.520 | 6.0 | 2.2 | HKC-3 |
| 2C70MM | Crankbait | PC70MM | 7' | M | MODERATE | 1 | 8-14 | 1/4-5/8 | 0.430 | 5.0 | 1.5 | HKC-3 |
| 2C60MHF | Bass/Pike/Saltwater | PC60MHF | 6' | MH | FAST | 1 | 10-20 | 3/8-1 | 0.485 | 6.0 | 1.8 | HKC-2 |
| 2C66MHF | Bass/Pike/Saltwater | PC66MHF | 6'6" | MH | FAST | 1 | 10-20 | 3/8-1 | 0.540 | 6.5 | 2.2 | HKC-3 |
| 2C66MHF2 | Bass/Pike/Saltwater | PC66MHF2 | 6'6" | MH | FAST | 2 | 10-20 | 3/8-1 | 0.565 | 5.0 | 2.4 | HKC-3 |
| 2C66MHM | Crankbait | PC66MHM | 6'6" | MH | MODERATE | 1 | 10-20 | 3/8-1 | 0.445 | 6.0 | 1.9 | HKC-3 |
| 2C70MHF | Bass/Pike/Saltwater | PC70MHF | 7' | MH | FAST | 1 | 10-20 | 3/8-1 | 0.555 | 6.5 | 2.7 | HKC-3 |
| 2C70MHM | Crankbait | PC70MHM | 7' | MH | MODERATE | 1 | 10-20 | 3/8-1 | 0.460 | 5.5 | 2.3 | HKC-3 |
| 2C66HF | Bass/Pike/Saltwater | PC66HF | 6'6" | H | FAST | 1 | 12-25 | 1/2-1 1/2 | 0.575 | 6.5 | 3.0 | HKC-3 |
| 2C610HMF | Bass/Pike/Saltwater | PC610HMF | 6'10" | H | MOD. FAST | 1 | 12-25 | 1/4-1 | 0.605 | 6.5 | 2.6 | HKC-3 |
| 2C70HF | Bass/Pike/Saltwater | PC70HF | 7' | H | FAST | 1 | 12-25 | 1/2-1 1/2 | 0.585 | 6.5 | 3.3 | HKC-4 |
| 2C70HF2 | Bass/Pike/Saltwater | PC70HF2 | 7' | H | FAST | 2 | 12-25 | 1/2-1 1/2 | 0.645 | 7.0 | 3.2 | HKC-4 |
| 2C70HM | Crankbait | PC70HM | 7' | H | MODERATE | 1 | 12-25 | 1/2-1 3/8 | 0.480 | 6.0 | 2.6 | HKC-3 |
| 2C76HF | Bass Flippin' Stick | PC76HF | 7'6" | H | FAST | 1 | 12-25 | 1/2-1 1/2 | 0.585 | 6.5 | 3.5 | HKC-4 |

SC^{II} GRAPHITE MUSKY/SALTWATER BLANKS (GLOSS BLACK PEARL FINISH)

| MODEL | TYPE | EQUIVALENT ST. CROIX ROD MODEL | LENGTH | POWER | ACTION | PCS. | LINE WT. RATING | LURE WT. (OZ.) | BUTT DIAMETER (INCH) | TIP SIZE | BLANK WT. (OZ.) | SUG. HANDLE KIT |
|-----------|--------------------------|--------------------------------------|--------|-------|--------|------|--------------------|----------------|----------------------------|-------------|--------------------|-----------------------|
| 2M610MF | Musky-Small Bucktail/SW | PM610MF | 6'10" | M | FAST | 1 | 17-30 | 1/2-2 | 0.600 | 8.0 | 3.5 | HKC-5 |
| 2M66MHF | Musky-All Purpose/SW | PM66MHF | 6'6" | MH | FAST | 1 | 20-50 | 3/4-3 | 0.655 | 8.5 | 3.4 | HKC-7 |
| 2M70MHF | Musky-All Purpose/SW | PM70MHF | 7' | MH | FAST | 1 | 20-50 | 3/4-3 | 0.670 | 8.5 | 3.8 | HKC-7 |
| 2M70MHF2 | Musky-All Purpose/SW | PM70MHF2 | 7' | MH | FAST | 2 | 20-50 | 3/4-3 | 0.600 | 8.0 | 3.7 | HKC-7 |
| 2M76MHF | Musky-All Purpose/SW | PM76MHF | 7'6" | MH | FAST | 1 | 20-50 | 3/4-3 | 0.715 | 7.0 | 5.4 | HKC-7 / HKC-8 |
| 2M80MHF | Musky-All Purpose/SW | PM80MHF | 8' | MH | FAST | 1 | 20-50 | 3/4-3 | 0.735 | 7.5 | 5.8 | HKC-8 |
| 2M70HF2 | Musky-Jerkbait/SW | PM70HF2 | 7' | H | FAST | 2 | 30-65 | 2-6 | 0.655 | 11.0 | 4.3 | HKC-7 |
| 2M76HF | Musky-Jerkbait/SW | PM76HF | 7'6" | H | FAST | 1 | 30-65 | 2-6 | 0.695 | 9.0 | 5.6 | HKC-7 / HKC-8 |
| 2M80HF | Musky- Large bucktail/SW | PM80HF | 8' | H | FAST | 1 | 30-65 | 2-6 | 0.705 | 9.0 | 6.2 | HKC-8 |
| 2M86HF | Musky-Large bucktail/SW | PM86HF | 8'6" | H | FAST | 1 | 30-65 | 2-6 | 0.722 | 9.0 | 7.0 | HKC-8 |
| 2M63XHF | Musky-Hvy. Jerkbait/SW | PM63XHF | 6'3" | XH | FAST | 1 | 36-80 | 3-8 | 0.640 | 10.0 | 4.2 | HKC-7 |
| 2M69XHF | Musky-Hvy. Jerkbait/SW | PM69XHF | 6'9" | XH | FAST | 1 | 36-80 | 3-8 | 0.655 | 10.5 | 4.7 | HKC-7 |
| 2M86XHF | Musky- Hvy. Jerkbait/SW | PM86XHF | 8'6" | XH | FAST | 1 | 36-80 | 4-10 | 0.720 | 9.5 | 6.8 | HKC-8 |
| 2M79XXXHF | Musky-Unlimited Wt./SW | PM79XXXHF | 7'9" | XXXH | FAST | 1 | 65-100 | 8-30 | 0.715 | 13.5 | 7.4 | HKC-8 |

SC^{II} GRAPHITE SALMON/STEELHEAD BLANKS (SATIN BLACK FINISH)

| MODEL | TYPE | EQUIVALENT ST. CROIX ROD MODEL | LENGTH | POWER | ACTION | PCS. | LINE WT. RATING | LURE WT. (OZ.) | BUTT DIAMETER (INCH) | TIP SIZE | BLANK WT. (OZ.) | SUG. HANDLE KIT |
|------------|------------------|--------------------------------------|--------|-------|-----------|------|--------------------|----------------|----------------------------|-------------|--------------------|-----------------------|
| 2S106ULS2 | Noodle | WS106ULS2 | 10'6" | UL | SLOW | 2 | 2-6 | 1/16-1/4 | 0.420 | 5.0 | 2.2 | HKS-7 |
| 2S90LM2 | Drift | WS90LM2 | 9' | L | MODERATE | 2 | 4-8 | 1/8-3/8 | 0.435 | 5.5 | 2.6 | HKS-7 |
| 2S116LM2 | Drift/Float | WS116LM2 | 11'6" | L | MODERATE | 2 | 4-10 | 1/16-1/2 | 0.455 | 6.5 | 3.1 | HKS-9 |
| 2S130LM2 | Float | WS130LM2 | 13' | L | MODERATE | 2 | 2-6 | 1/16-3/8 | 0.470 | 5.0 | 3.3 | HKS-9 |
| 2S76MLF2 | Spinning | WS76MLF2 | 7'6" | ML | FAST | 2 | 6-12 | 1/8-1/2 | 0.495 | 5.0 | 2.0 | HKS-5 |
| 2C106MLMF2 | Drift | WC/WS106MLMF2 | 10'6" | ML | MOD. FAST | 2 | 8-14 | 1/8-1/2 | 0.465 | 6.0 | 3.3 | HKC-6 / HKS-6 |
| 2C80MXF | Plugging | WC80MXF | 8' | M | X-FAST | 1 | 8-20 | 3/8-3 | 0.600 | 5.5 | 3.4 | HKC-6 |
| 2C86MF2 | Casting/Spinning | WC/WS86MF2 | 8'6" | M | FAST | 2 | 8-12 | 3/8-3/4 | 0.485 | 4.5 | 3.0 | HKC-6 / HKS-6 |
| 2C96MF2 | Casting/Spinning | WC/WS96MF2 | 9'6" | M | FAST | 2 | 8-12 | 3/8-3/4 | 0.485 | 4.5 | 3.2 | HKC-6 / HKS-6 |
| 2C106MMF2 | Drift | WC/WS106MMF2 | 10'6" | M | MOD. FAST | 2 | 8-20 | 1/4-3/4 | 0.520 | 5.5 | 4.0 | HKC-6 / HKS-6 |
| 2C86MHF2 | Casting/Spinning | WC/WS86MHF2 | 8'6" | MH | FAST | 2 | 8-17 | 3/8-1 1/4 | 0.525 | 4.5 | 3.1 | HKC-6 / HKS-6 |
| 2C96MHF2 | Casting/Spinning | WC/WS96MHF2 | 9'6" | MH | FAST | 2 | 8-17 | 3/8-1 1/4 | 0.510 | 4.5 | 3.3 | HKC-6 / HKS-6 |
| 2C80HF | Backbouncing | WC80HF | 8' | H | FAST | 1 | 12-25 | 1-4 | 0.585 | 6.0 | 3.1 | HKC-6 |
| 2C80HF2 | Backbouncing | WC80HF2 | 8' | H | FAST | 2 | 15-40 | 3/4-3 | 0.750 | 7.0 | 4.8 | HKC-6 |
| 2C86HF2 | Casting/Spinning | WC/WS86HF2 | 8'6" | H | FAST | 2 | 12-25 | 1/2-2 | 0.580 | 6.0 | 3.6 | HKC-6 / HKS-6 |
| 2C80XHF | Casting | WC80XHF | 8' | XH | FAST | 1 | 15-40 | 2-8 | 0.640 | 7.0 | 3.7 | HKC-6 |

SC^{III} GRAPHITE INSHORE SALTWATER BLANKS (COPPER PEARL FINISH)



| MODEL | TYPE | EQUIVALENT ST. CROIX ROD MODEL | LENGTH | POWER | ACTION | PCS. | LINE WT. RATING | LURE WT. (OZ.) | BUTT DIAMETER (INCH) | TIP SIZE | BLANK WT. (OZ.) | SUG. HANDLE KIT |
|----------|------------------|--------------------------------|--------|-------|----------|------|-----------------|----------------|----------------------|----------|-----------------|-----------------|
| 3SW70LM | Spinning/Casting | AIS70LM | 7' | L | MODERATE | 1 | 6-12 | 1/8-3/8 | 0.400 | 4.5 | 1.3 | HKS-4 / HKC-2 |
| 3SW70MLF | Spinning/Casting | AIS70MLF | 7' | ML | FAST | 1 | 6-12 | 1/8-1/2 | 0.420 | 5.0 | 2.0 | HKS-4 / HKC-2 |
| 3SW76MLF | Spinning/Casting | AIS76MLF | 7'6" | ML | FAST | 1 | 6-12 | 1/8-1/2 | 0.500 | 4.0 | 2.1 | HKS-5 / HKC-3 |
| 3SW80MLF | Spinning/Casting | AIS80MLF | 8' | ML | FAST | 1 | 6-12 | 1/8-1/2 | 0.490 | 4.5 | 2.1 | HKS-5 / HKC-3 |
| 3SW66MF | Spinning/Casting | AIS66MF | 6'6" | M | FAST | 1 | 8-17 | 3/8-3/4 | 0.510 | 5.5 | 1.9 | HKS-5 / HKC-3 |
| 3SW70MF | Spinning/Casting | AIS70MF | 7' | M | FAST | 1 | 8-17 | 3/8-3/4 | 0.520 | 5.5 | 2.2 | HKS-5 / HKC-3 |
| 3SW70MM | Spinning/Casting | AIS70MM | 7' | M | MODERATE | 1 | 8-17 | 1/4-5/8 | 0.430 | 4.5 | 1.6 | HKS-5 / HKC-3 |
| 3SW76MF | Spinning/Casting | AIS76MF | 7'6" | M | FAST | 1 | 8-17 | 3/8-3/4 | 0.530 | 5.5 | 2.6 | HKS-5 / HKC-3 |
| 3SW80MF | Spinning/Casting | AIS80MF | 8' | M | FAST | 1 | 8-17 | 3/8-3/4 | 0.550 | 6.0 | 2.9 | HKS-6 / HKC-4 |
| 3SW66MHF | Spinning/Casting | AIS66MHF | 6'6" | MH | FAST | 1 | 10-20 | 1/2-1 1/4 | 0.530 | 6.0 | 2.6 | HKS-5 / HKC-3 |
| 3SW70MHF | Spinning/Casting | AIS/AIC70MHF | 7' | MH | FAST | 1 | 10-20 | 1/2-1 1/4 | 0.545 | 6.0 | 3.0 | HKS-5 / HKC-3 |
| 3SW76MHF | Spinning/Casting | AIS/AIC76MHF | 7'6" | MH | FAST | 1 | 10-20 | 1/2-1 1/4 | 0.565 | 6.0 | 3.6 | HKS-6 / HKC-4 |
| 3SW80MHF | Spinning/Casting | AIS/AIC80MHF | 8' | MH | FAST | 1 | 14-30 | 1/2-2 | 0.585 | 6.0 | 4.1 | HKS-6 / HKC-4 |
| 3SW70HF | Spinning/Casting | AIS/AIC70HF | 7' | H | FAST | 1 | 15-30 | 3/4-2 | 0.595 | 7.0 | 3.6 | HKS-5 / HKC-3 |
| 3SW76HF | Spinning/Casting | AIS/AIC76HF | 7'6" | H | FAST | 1 | 15-30 | 3/4-2 | 0.605 | 7.0 | 4.2 | HKS-6 / HKC-4 |
| 3SW80HF | Spinning/Casting | AIS/AIC80HF | 8' | H | FAST | 1 | 17-40 | 3/4-3 | 0.665 | 7.0 | 4.6 | HKS-6 / HKC-4 |

SC^{II} GRAPHITE INSHORE SALTWATER BLANKS (GLOSS GREEN FINISH)

| MODEL | TYPE | EQUIVALENT ST. CROIX ROD MODEL | LENGTH | POWER | ACTION | PCS. | LINE WT. RATING | LURE WT. (OZ.) | BUTT DIAMETER (INCH) | TIP SIZE | BLANK WT. (OZ.) | SUG. HANDLE KIT |
|----------|------------------|--------------------------------|--------|-------|----------|------|-----------------|----------------|----------------------|----------|-----------------|-----------------|
| 2SW70LM | Spinning/Casting | TIS/TIC70LM | 7' | L | MODERATE | 1 | 6-12 | 1/8-3/8 | 0.415 | 5.0 | 1.3 | HKC-2 / HKS-4 |
| 2SW76LM | Spinning/Casting | TIS76LM | 7'6" | L | MODERATE | 1 | 6-12 | 1/8-3/8 | 0.430 | 5.0 | 1.7 | HKC-2 / HKS-4 |
| 2SW70MLF | Spinning/Casting | TIS/TIC70MLF | 7' | ML | FAST | 1 | 8-14 | 1/8-1/2 | 0.455 | 5.0 | 2.2 | HKC-3 / HKS-5 |
| 2SW76MLF | Spinning/Casting | TIS76MLF | 7'6" | ML | FAST | 1 | 8-14 | 1/8-1/2 | 0.465 | 5.0 | 2.4 | HKC-3 / HKS-5 |
| 2SW80MLF | Spinning | TIS80MLF | 8' | ML | FAST | 1 | 8-14 | 1/8-1/2 | 0.495 | 5.0 | 3.0 | HKS-5 |
| 2SW66MF | Spinning/Casting | TIS66MF | 6'6" | M | FAST | 1 | 8-17 | 3/8-3/4 | 0.515 | 5.5 | 2.0 | HKC-3 / HKS-5 |
| 2SW66MM | Spinning/Casting | TIS66MM | 6'6" | M | MODERATE | 1 | 8-17 | 1/4-5/8 | 0.440 | 5.0 | 1.6 | HKC-3 / HKS-5 |
| 2SW70MF | Spinning/Casting | TIS/TIC70MF | 7' | M | FAST | 1 | 8-17 | 3/8-3/4 | 0.520 | 5.5 | 2.2 | HKC-3 / HKS-5 |
| 2SW70MM | Spinning/Casting | TIS/TIC70MM | 7' | M | MODERATE | 1 | 8-17 | 1/4-5/8 | 0.450 | 5.0 | 1.7 | HKC-3 / HKS-5 |
| 2SW76MF | Spinning/Casting | TIS/TIC76MF | 7'6" | M | FAST | 1 | 8-17 | 3/8-3/4 | 0.545 | 5.5 | 2.7 | HKC-4 / HKS-6 |
| 2SW76MM | Spinning/Casting | TIS76MM | 7'6" | M | MODERATE | 1 | 8-17 | 1/4-5/8 | 0.465 | 5.0 | 2.1 | HKC-4 / HKS-6 |
| 2SW80MF | Spinning/Casting | TIS80MF | 8' | M | FAST | 1 | 8-17 | 3/8-3/4 | 0.565 | 5.5 | 3.2 | HKC-4 / HKS-6 |
| 2SW66MHF | Spinning/Casting | TIS/TIC66MHF | 6'6" | MH | FAST | 1 | 10-20 | 1/2-1 1/4 | 0.520 | 6.0 | 2.2 | HKC-3 / HKS-5 |
| 2SW66MHM | Spinning/Casting | TIS66MHM | 6'6" | MH | MODERATE | 1 | 10-20 | 1/2-1 | 0.525 | 6.0 | 1.9 | HKC-3 / HKS-5 |
| 2SW70MHF | Spinning/Casting | TIS/TIC70MHF | 7' | MH | FAST | 1 | 10-20 | 1/2-1 1/4 | 0.535 | 6.0 | 2.7 | HKC-3 / HKS-5 |
| 2SW70MHM | Spinning/Casting | TIS70MHM | 7' | MH | MODERATE | 1 | 10-20 | 1/2-1 | 0.530 | 6.0 | 2.2 | HKC-3 / HKS-5 |
| 2SW76MHF | Spinning/Casting | TIS/TIC76MHF | 7'6" | MH | FAST | 1 | 10-20 | 1/2-1 1/4 | 0.575 | 5.5 | 3.2 | HKC-4 / HKS-6 |
| 2SW80MHF | Spinning/Casting | TIS/TIC80MHF | 8' | MH | FAST | 1 | 14-30 | 1/2-2 | 0.615 | 6.5 | 3.7 | HKC-4 / HKS-6 |
| 2SW66HF | Spinning/Casting | TIS/TIC66HF | 6'6" | H | FAST | 1 | 12-25 | 3/4-2 | 0.570 | 7.0 | 3.1 | HKC-3 / HKS-5 |
| 2SW66HM | Spinning/Casting | TIS66HM | 6'6" | H | MODERATE | 1 | 12-25 | 3/4-1 1/2 | 0.560 | 6.5 | 2.5 | HKC-3 / HKS-5 |
| 2SW70HF | Spinning/Casting | TIS/TIC70HF | 7' | H | FAST | 1 | 12-25 | 3/4-2 | 0.580 | 7.0 | 3.5 | HKC-3 / HKS-5 |
| 2SW70HM | Spinning/Casting | TIS70HM | 7' | H | MODERATE | 1 | 12-25 | 3/4-1 1/2 | 0.570 | 6.5 | 3.0 | HKC-3 / HKS-5 |
| 2SW76HF | Spinning/Casting | TIS/TIC76HF | 7'6" | H | FAST | 1 | 12-25 | 3/4-2 | 0.620 | 6.5 | 3.7 | HKC-4 / HKS-6 |
| 2SW80HF | Spinning/Casting | TIS/TIC80HF | 8' | H | FAST | 1 | 17-40 | 3/4-3 | 0.655 | 7.0 | 4.8 | HKC-4 / HKS-6 |

SC^{II} GRAPHITE INSHORE SALTWATER TRAVEL BLANKS (GLOSS GREEN FINISH)

| MODEL | TYPE | EQUIVALENT ST. CROIX ROD MODEL | LENGTH | POWER | ACTION | PCS. | LINE WT. RATING | LURE WT. (OZ.) | BUTT DIAMETER (INCH) | TIP SIZE | BLANK WT. (OZ.) | SUG. HANDLE KIT |
|-----------|------------------|--------------------------------|--------|-------|--------|------|-----------------|----------------|----------------------|----------|-----------------|-----------------|
| 2SW70MLF3 | Spinning/Casting | TIS70MLF3 | 7' | ML | FAST | 3 | 8-14 | 1/8-1/2 | 0.505 | 4.5 | 2.0 | HKC-3 / HKS-5 |
| 2SW70MF3 | Spinning/Casting | TIS/TIC70MF3 | 7' | M | FAST | 3 | 8-17 | 3/8-3/4 | 0.565 | 5.0 | 2.3 | HKC-3 / HKS-5 |
| 2SW76MF3 | Spinning/Casting | TIS76MF3 | 7'6" | M | FAST | 3 | 8-17 | 3/8-3/4 | 0.600 | 5.0 | 3.1 | HKC-4 / HKS-6 |
| 2SW70MHF3 | Spinning/Casting | TIS/TIC70MHF3 | 7' | MH | FAST | 3 | 10-20 | 1/2-1 1/4 | 0.585 | 5.5 | 2.5 | HKC-3 / HKS-5 |
| 2SW76MHF3 | Spinning/Casting | TIS/TIC76MHF3 | 7'6" | MH | FAST | 3 | 10-20 | 1/2-1 1/4 | 0.635 | 5.5 | 3.3 | HKC-4 / HKS-6 |
| 2SW76HF3 | Spinning/Casting | TIS/TIC76HF3 | 7'6" | H | FAST | 3 | 12-25 | 3/4-2 | 0.650 | 6.0 | 3.5 | HKC-4 / HKS-6 |

SC^{IV} GRAPHITE SURF BLANKS (BELIZE BLUE / 1PC OR BELIZE BLUE/SATIN CARBON FINISH / 2PC)



| MODEL | TYPE | EQUIVALENT ST. CROIX ROD MODEL | LENGTH | POWER | ACTION | PCS. | LINE WT. RATING | LURE WT. (OZ.) | BUTT DIAMETER (INCH) | TIP SIZE | BLANK WT. (OZ.) | SUG. HANDLE KIT |
|--------------|------------------|--------------------------------|--------|-------|-----------|------|-----------------|----------------|----------------------|----------|-----------------|-----------------|
| 4SRS70MMF | Spinning | LSS70MMF | 7' | M | MOD. FAST | 1 | 8-17 | 5/8-2 | 0.650 | 6.0 | 2.7 | N/A |
| 4SRS80MMF | Spinning | LSS80MMF | 8' | M | MOD. FAST | 1 | 8-17 | 3/4-3 | 0.695 | 6.0 | 3.6 | N/A |
| 4SRS90MMF2 | Spinning/Casting | LSS90MMF2 | 9' | M | MOD. FAST | 2 | 10-20 | 1-4 | 0.740 | 7.0 | 4.9 | N/A |
| 4SRS90MM2 | Spinning | LSS90MM2 | 9' | M | MODERATE | 2 | 10-20 | 3/4-4 | 0.740 | 7.0 | 4.8 | N/A |
| 4SRS100MMF2 | Spinning/Casting | LSS/LSC100MMF2 | 10' | M | MOD. FAST | 2 | 10-20 | 1-4 | 0.745 | 8.0 | 5.6 | N/A |
| 4SRS106MM2 | Spinning | LSS106MM2 | 10'6" | M | MODERATE | 2 | 10-20 | 3/4-4 | 0.780 | 7.0 | 5.9 | N/A |
| 4SRS106MHMF2 | Spinning/Casting | LSS/LSC106MHMF2 | 10'6" | MH | MOD. FAST | 2 | 12-25 | 2-6 | 0.780 | 7.0 | 6.0 | N/A |
| 4SRS110MHMF2 | Spinning/Casting | LSS/LSC110MHMF2 | 11' | MH | MOD. FAST | 2 | 15-40 | 3-8 | 0.808 | 7.5 | 6.6 | N/A |

SC^{II} / SC^{III} GRAPHITE SURF BLANKS (SATIN BLACK FINISH)

| MODEL | TYPE | EQUIVALENT ST. CROIX ROD MODEL | LENGTH | POWER | ACTION | PCS. | LINE WT. RATING | LURE WT. (OZ.) | BUTT DIAMETER (INCH) | TIP SIZE | BLANK WT. (OZ.) | SUG. HANDLE KIT |
|------------|------------------|--------------------------------|--------|-------|-----------|------|-----------------|----------------|----------------------|----------|-----------------|-----------------|
| 2SRS70L | Spinning | PSRS70L | 7' | L | MOD. FAST | 1 | 4-8 | 1/4-5/8 | 0.570 | 5.0 | 2.4 | N/A |
| 2SRS70ML | Spinning | PSRS70ML | 7' | ML | MOD. FAST | 1 | 6-10 | 3/8-3/4 | 0.600 | 6.5 | 2.9 | N/A |
| 2SRS70M | Spinning | PSRS70M | 7' | M | MOD. FAST | 1 | 8-17 | 1/2-2 | 0.575 | 7.5 | 3.4 | N/A |
| 2SRS80M | Spinning | PSRS80M | 8' | M | MOD. FAST | 1 | 6-17 | 1/2-2 | 0.645 | 8.0 | 4.8 | N/A |
| 2SRS86M2 | Spinning/Casting | PSRS/PSRC86M2 | 8'6" | M | MOD. FAST | 2 | 6-17 | 1/2-2 | 0.840 | 8.0 | 5.6 | N/A |
| 2SRS100M2 | Spinning/Casting | PSRS/PSRC100M2 | 10' | M | MOD. FAST | 2 | 6-20 | 3/4-4 | 0.815 | 8.0 | 8.3 | N/A |
| 2SRS106MH2 | Spinning/Casting | PSRS/PSRC106MH2 | 10'6" | MH | MOD. FAST | 2 | 10-25 | 2-6 | 0.880 | 12.0 | 12.8 | N/A |
| 2SRS116MH2 | Spinning/Casting | PSRS/PSRC116MH2 | 11'6" | MH | MOD. FAST | 2 | 10-25 | 2-6 | 0.990 | 12.0 | 13.7 | N/A |
| 2SRS106H2 | Spinning/Casting | PSRS/PSRC106H2 | 10'6" | H | MOD. FAST | 2 | 15-30 | 4-8 | 0.885 | 15.0 | 12.6 | N/A |
| 2SRC120XH2 | Casting | PSRC120XH2 | 12' | XH | MOD. FAST | 2 | 20-60 | 4-16 | 1.200 | 14.0 | 18.0 | N/A |

SC^{II} GRAPHITE / NSI RESIN BOAT ROD BLANKS (GLOSS BLACK FINISH)



| MODEL | TYPE | EQUIVALENT ST. CROIX ROD MODEL | LENGTH | POWER | ACTION | PCS. | LINE WT. RATING | LURE WT. (OZ.) | BUTT DIAMETER (INCH) | TIP SIZE | BLANK WT. (OZ.) | SUG. HANDLE KIT |
|------------|----------------|--------------------------------|--------|-------|----------|------|---------------------------|----------------|----------------------|----------|-----------------|-----------------|
| 2SWC66MF | Conventional | LSWC66MF | 6'6" | M | Fast | 1 | 15-30 Mono / 20-40 Braid | N/A | 0.520 | 5.5 | 3.7 | N/A |
| 2SWC70MF | Conv./Spinning | LSWC/LSWS70MF | 7' | M | Fast | 1 | 15-30 Mono / 20-40 Braid | N/A | 0.571 | 5.5 | 4.3 | N/A |
| 2SWC66MHF | Conventional | LSWC66MHF | 6'6" | MH | Fast | 1 | 30-50 Mono / 40-65 Braid | N/A | 0.557 | 6.0 | 4.5 | N/A |
| 2SWC70MHF | Conv./Spinning | LSWC/LSWS70MHF | 7' | MH | Fast | 1 | 30-50 Mono / 40-65 Braid | N/A | 0.607 | 6.0 | 5.2 | N/A |
| 2SWS76MHF | Spinning | LSWS76MHF | 7'6" | MH | Fast | 1 | 30-50 Mono / 40-65 Braid | N/A | 0.615 | 6.0 | 6.3 | N/A |
| 2SWC66HF | Conventional | LSWC66HF | 6'6" | H | Fast | 1 | 50-80 Mono / 65-100 Braid | N/A | 0.593 | 8.5 | 4.8 | N/A |
| 2SWC70HF | Conv./Spinning | LSWC/LSWS70HF | 7' | H | Fast | 1 | 50-80 Mono / 65-100 Braid | N/A | 0.649 | 8.5 | 6.7 | N/A |
| * 2SWS80HM | Spinning | LSWS80HM | 8' | H | MODERATE | 1 | 50-80 Mono / 65-100 Braid | N/A | 0.668 | 6.5 | 7.8 | N/A |

* New for 2012

SC^V GRAPHITE / NSI RESIN FRESHWATER FLY BLANKS (GLOSS GALLATIN GREEN FINISH)



| MODEL | TYPE | EQUIVALENT ST. CROIX ROD MODEL | LENGTH | LINE WT. RATING | PCS. | ACTION | BUTT DIAMETER (INCH) | TIP SIZE | BLANK WT. (OZ.) | SUG. HANDLE KIT |
|-----------|-----------------------|--------------------------------|--------|-----------------|------|--------|----------------------|----------|-----------------|-----------------|
| 5FF793.4 | Trout | EFW793.4 | 7'9" | 3 | 4 | FAST | 0.285 | 3.0 | 1.0 | N/A |
| 5FF864.4 | Trout/Panfish | EFW864.4 | 8'6" | 4 | 4 | FAST | 0.325 | 4.0 | 1.3 | N/A |
| 5FF904.4 | Trout/Panfish | EFW904.4 | 9' | 4 | 4 | FAST | 0.315 | 3.5 | 1.4 | N/A |
| 5FF865.4 | Trout/Panfish | EFW865.4 | 8'6" | 5 | 4 | FAST | 0.330 | 4.0 | 1.5 | N/A |
| 5FF905.4 | Trout/Panfish | EFW905.4 | 9' | 5 | 4 | FAST | 0.325 | 3.5 | 1.6 | N/A |
| 5FF906.4 | Trout | EFW906.4 | 9' | 6 | 4 | FAST | 0.340 | 4.0 | 1.7 | N/A |
| 5FF907.4 | Bass/Steelhead | EFW907.4 | 9' | 7 | 4 | FAST | 0.350 | 4.0 | 1.8 | N/A |
| 5FF967.4 | Salmon/Steelhead | EFW967.4 | 9'6" | 7 | 4 | FAST | 0.350 | 4.0 | 1.9 | N/A |
| 5FF908.4 | Bass/Salmon/Steelhead | EFW908.4 | 9' | 8 | 4 | FAST | 0.375 | 4.0 | 1.9 | N/A |
| 5FF968.4 | Salmon/Steelhead | EFW968.4 | 9'6" | 8 | 4 | FAST | 0.380 | 4.0 | 2.0 | N/A |
| 5FF909.4 | Salmon/Pike | EFW909.4 | 9' | 9 | 4 | FAST | 0.385 | 4.0 | 2.1 | N/A |
| 5FF9010.4 | Salmon/Musky | EFW9010.4 | 9' | 10 | 4 | FAST | 0.405 | 4.0 | 2.3 | N/A |

SC^V GRAPHITE / NSI RESIN SALTWATER FLY BLANKS (GLOSS BELIZE BLUE FINISH)



| MODEL | TYPE | EQUIVALENT ST. CROIX ROD MODEL | LENGTH | LINE WT. RATING | PCS. | ACTION | BUTT DIAMETER (INCH) | TIP SIZE | BLANK WT. (OZ.) | SUG. HANDLE KIT |
|-----------|--------------------|--------------------------------|--------|-----------------|------|--------|----------------------|----------|-----------------|-----------------|
| 5FS906.4 | Light Saltwater | ESW906.4 | 9' | 6 | 4 | FAST | 0.360 | 4.0 | 1.8 | N/A |
| 5FS907.4 | Saltwater | ESW907.4 | 9' | 7 | 4 | FAST | 0.380 | 4.0 | 2.0 | N/A |
| 5FS908.4 | Saltwater | ESW908.4 | 9' | 8 | 4 | FAST | 0.400 | 4.0 | 2.1 | N/A |
| 5FS909.4 | Saltwater | ESW909.4 | 9' | 9 | 4 | FAST | 0.415 | 4.0 | 2.3 | N/A |
| 5FS9010.4 | Saltwater | ESW9010.4 | 9' | 10 | 4 | FAST | 0.425 | 4.0 | 2.5 | N/A |
| 5FS9012.4 | Big Game Saltwater | ESW9012.4 | 9' | 12 | 4 | FAST | 0.440 | 5.0 | 2.8 | N/A |

SC^{IV} / SC^{III} GRAPHITE FLY BLANKS (GLOSS BURGUNDY FINISH)

| MODEL | TYPE | EQUIVALENT ST. CROIX ROD MODEL | LENGTH | LINE WT. RATING | PCS. | ACTION | BUTT DIAMETER (INCH) | TIP SIZE | BLANK WT. (OZ.) | SUG. HANDLE KIT |
|-----------|---------------------------------|--------------------------------|--------|-----------------|------|--------|----------------------|----------|-----------------|-----------------|
| 42F602.2 | Trout | I606.2 | 6' | 2 | 2 | FAST | 0.250 | 3.5 | 0.6 | HKF-1 |
| 42F663.2 | Trout | I663.2 | 6'6" | 3 | 2 | FAST | 0.275 | 3.5 | 0.7 | HKF-1 |
| 42F703.4 | Trout | I703.4 | 7' | 3 | 4 | FAST | 0.280 | 3.5 | 0.8 | HKF-1 |
| 42F863.4 | Trout | I863.4 | 8'6" | 3 | 4 | FAST | 0.300 | 3.5 | 1.2 | HKF-1 |
| 42F764.2 | Trout | I764.2 | 7'6" | 4 | 2 | FAST | 0.325 | 3.5 | 1.1 | HKF-1 |
| 42F764.4 | Trout | I764.4 | 7'6" | 4 | 4 | FAST | 0.290 | 3.5 | 1.0 | HKF-1 |
| 42F804.2 | Trout/Panfish | I804.2 | 8' | 4 | 2 | FAST | 0.335 | 3.5 | 1.3 | HKF-1 |
| 42F804.4 | Trout/Panfish | I804.4 | 8' | 4 | 4 | FAST | 0.290 | 3.5 | 1.1 | HKF-1 |
| 42F864.4 | Trout/Panfish | I864.4 | 8'6" | 4 | 4 | FAST | 0.310 | 3.5 | 1.3 | HKF-2 |
| 42F904.2 | Trout/Panfish | I904.2 | 9' | 4 | 2 | FAST | 0.374 | 4.0 | 1.6 | HKF-2 |
| 42F904.4 | Trout/Panfish | I904.4 | 9' | 4 | 4 | FAST | 0.320 | 4.0 | 1.5 | HKF-2 |
| 42F805.2 | Trout/Panfish | I805.2 | 8' | 5 | 2 | FAST | 0.355 | 4.0 | 1.4 | HKF-2 |
| 42F805.4 | Trout/Panfish | I805.4 | 8' | 5 | 4 | FAST | 0.305 | 4.0 | 1.2 | HKF-2 |
| 42F865.2 | Trout/Panfish | I865.2 | 8'6" | 5 | 2 | FAST | 0.370 | 4.0 | 1.6 | HKF-2 |
| 42F865.4 | Trout/Panfish | I865.4 | 8'6" | 5 | 4 | FAST | 0.315 | 4.0 | 1.3 | HKF-2 |
| 42F905.2 | Trout/Panfish | I905.2 | 9' | 5 | 2 | FAST | 0.380 | 4.0 | 1.7 | HKF-2 |
| 42F905.4 | Trout/Panfish | I905.4 | 9' | 5 | 4 | FAST | 0.330 | 4.0 | 1.6 | HKF-2 |
| 42F906.2 | Trout | I906.2 | 9' | 6 | 2 | FAST | 0.390 | 4.0 | 1.9 | HKF-2 |
| 42F906.4 | Trout | I906.4 | 9' | 6 | 4 | FAST | 0.350 | 4.0 | 1.8 | HKF-2 |
| 42F1006.4 | Trout | I1006.4 | 10' | 6 | 4 | FAST | 0.335 | 4.0 | 1.9 | HKF-3 |
| 42F907.4 | Bass/Steelhead/Saltwater | I907.4 | 9' | 7 | 4 | FAST | 0.360 | 4.0 | 1.9 | HKF-3 |
| 42F1007.4 | Salmon/Steelhead | I1007.4 | 10' | 7 | 4 | FAST | 0.355 | 4.0 | 2.1 | HKF-3 |
| 42F908.2 | Bass/Salmon/Steelhead/Saltwater | I908.2 | 9' | 8 | 2 | FAST | 0.410 | 4.0 | 2.0 | HKF-3 |
| 42F908.4 | Bass/Salmon/Steelhead/Saltwater | I908.4 | 9' | 8 | 4 | FAST | 0.390 | 4.0 | 2.0 | HKF-3 |
| 42F968.4 | Salmon/Steelhead | I968.4 | 9'6" | 8 | 4 | FAST | 0.390 | 4.0 | 2.2 | HKF-3 |
| 42F1008.4 | Salmon/Steelhead | I1008.4 | 10' | 8 | 4 | FAST | 0.395 | 4.0 | 2.7 | HKF-3 |
| 42F909.2 | Salmon/Pike/Saltwater | I909.2 | 9' | 9 | 2 | FAST | 0.420 | 4.0 | 2.2 | HKF-4 |
| 42F909.4 | Salmon/Pike/Saltwater | I909.4 | 9' | 9 | 4 | FAST | 0.400 | 4.0 | 2.2 | HKF-4 |
| 42F9010.2 | Salmon/Musky/Saltwater | I9010.2 | 9' | 10 | 2 | FAST | 0.430 | 4.0 | 2.3 | HKF-4 |
| 42F9010.4 | Salmon/Musky/Saltwater | I9010.4 | 9' | 10 | 4 | FAST | 0.405 | 4.0 | 2.4 | HKF-4 |
| 42F1105.4 | Switch | I1105.4 | 11' | 5 | 4 | FAST | 0.365 | 4.0 | 2.3 | N/A |
| 42F1106.4 | Switch | I1106.4 | 11' | 6 | 4 | FAST | 0.375 | 4.0 | 2.4 | N/A |
| 42F1107.4 | Switch | I1107.4 | 11' | 7 | 4 | FAST | 0.395 | 4.0 | 2.7 | N/A |
| 42F1108.4 | Switch | I1108.4 | 11' | 8 | 4 | FAST | 0.425 | 4.0 | 3.0 | N/A |

SC^{IV} / SC^{II} GRAPHITE FLY BLANKS (FUCHSIA METALLIC FINISH)

| MODEL | TYPE | EQUIVALENT ST. CROIX ROD MODEL | LENGTH | LINE WT. RATING | PCS. | ACTION | BUTT DIAMETER (INCH) | TIP SIZE | BLANK WT. (OZ.) | SUG. HANDLE KIT |
|------------|---------------------------------|--------------------------------|--------|-----------------|------|--------|----------------------|----------|-----------------|-----------------|
| 42F804.4-F | Trout/Panfish | N/A | 8' | 4 | 4 | FAST | 0.290 | 3.5 | 1.1 | N/A |
| 42F865.4-F | Trout/Panfish | N/A | 8'6" | 5 | 4 | FAST | 0.315 | 4.0 | 1.3 | N/A |
| 42F905.4-F | Trout/Panfish | N/A | 9' | 5 | 4 | FAST | 0.330 | 4.0 | 1.6 | N/A |
| 42F906.4-F | Trout | N/A | 9' | 6 | 4 | FAST | 0.350 | 4.0 | 1.8 | N/A |
| 42F907.4-F | Bass/Steelhead/Saltwater | N/A | 9' | 7 | 4 | FAST | 0.360 | 4.0 | 1.9 | N/A |
| 42F908.4-F | Bass/Salmon/Steelhead/Saltwater | N/A | 9' | 8 | 4 | FAST | 0.390 | 4.0 | 2.0 | N/A |

SC^{III} GRAPHITE FLY BLANKS (GLOSS CANTEEN GREEN PEARL FINISH)



| MODEL | TYPE | EQUIVALENT ST. CROIX ROD MODEL | LENGTH | LINE WT. RATING | PCS. | ACTION | BUTT DIAMETER (INCH) | TIP SIZE | BLANK WT. (OZ.) | SUG. HANDLE KIT |
|---------|--------------------------|--------------------------------|--------|-----------------|------|----------|----------------------|----------|-----------------|-----------------|
| 3F762.4 | Trout | A762.4 | 7'6" | 2 | 4 | MODERATE | 0.250 | 3.0 | 0.9 | HKF-1 |
| 3F603.2 | Trout | A603.2 | 6' | 3 | 2 | MODERATE | 0.290 | 3.5 | 0.7 | HKF-1 |
| 3F663.4 | Trout | A663.4 | 6'6" | 3 | 4 | MODERATE | 0.275 | 3.5 | 0.9 | HKF-1 |
| 3F703.2 | Trout | A703.2 | 7' | 3 | 2 | MODERATE | 0.280 | 3.5 | 0.8 | HKF-1 |
| 3F793.4 | Trout | A793.4 | 7'9" | 3 | 4 | MODERATE | 0.285 | 3.5 | 1.0 | HKF-1 |
| 3F664.4 | Trout | A664.4 | 6'6" | 4 | 4 | MODERATE | 0.280 | 3.5 | 0.9 | HKF-1 |
| 3F704.2 | Trout | A704.2 | 7' | 4 | 2 | MODERATE | 0.305 | 3.5 | 1.0 | HKF-1 |
| 3F794.4 | Trout | A794.4 | 7'9" | 4 | 4 | MODERATE | 0.300 | 3.5 | 1.2 | HKF-1 |
| 3F864.4 | Trout/Panfish | A864.4 | 8'6" | 4 | 4 | MODERATE | 0.325 | 4.0 | 1.5 | HKF-2 |
| 3F904.2 | Trout/Panfish | A904.2 | 9' | 4 | 2 | MODERATE | 0.380 | 4.5 | 1.9 | HKF-2 |
| 3F904.4 | Trout/Panfish | A904.4 | 9' | 4 | 4 | MODERATE | 0.335 | 4.5 | 1.8 | HKF-2 |
| 3F805.4 | Trout/Panfish | A805.4 | 8' | 5 | 4 | MODERATE | 0.340 | 4.5 | 1.5 | HKF-2 |
| 3F865.4 | Trout/Panfish | A865.4 | 8'6" | 5 | 4 | MODERATE | 0.330 | 4.5 | 1.5 | HKF-2 |
| 3F905.2 | Trout/Panfish | A905.2 | 9' | 5 | 2 | MODERATE | 0.390 | 4.5 | 2.0 | HKF-2 |
| 3F905.4 | Trout/Panfish | A905.4 | 9' | 5 | 4 | MODERATE | 0.340 | 4.5 | 1.9 | HKF-2 |
| 3F906.2 | Trout | A906.2 | 9' | 6 | 2 | MODERATE | 0.405 | 4.5 | 2.1 | HKF-2 |
| 3F906.4 | Trout | A906.4 | 9' | 6 | 4 | MODERATE | 0.345 | 4.5 | 1.9 | HKF-2 |
| 3F907.4 | Steelhead/Bass/Saltwater | A907.4 | 9' | 7 | 4 | MODERATE | 0.355 | 4.5 | 2.0 | HKF-3 |

SUGGESTED GUIDE SIZE & SPACING CHART

| STYLE | INCHES FROM TIP TOP | SIZE |
|--|---|------------------------|
| CASTING (BASS & WALLEYE) | | |
| 5'6" | 4.5-9.5-15.5-22.5-30-39 | 12-10-8-6-6-6 |
| 6'0" | 4.5-9.5-15.5-22.5-31.5-42.5 | 12-10-8-6-6-6 |
| 6'2" | 4.5-9.5-15.5-22.5-31.5-42.5 | 12-10-8-6-6-6 |
| 6'6" | 4-8.5-13.5-19.5-26.5-34.6-44.5 | 12-10-8-6-6-6-6 |
| 7'0" | 5-10.5-16.5-23-31-40-50 | 12-10-8-6-6-6-6 |
| 7'6" tel. | 4-9-15-22-30-39-49 | 12-10-8-6-6-6-6 |
| CASTING (MUSKY) | | |
| 6'0" | 5-10.5-16.5-24-34.5 | 20-16-12-10-8 |
| 6'6" | 5-10.5-16.5-24-32.5-42 | 20-16-12-10-8-8 |
| 7'0" | 4.5-9.5-15-21-28.5-37.5-48 | 20-16-12-10-8-8-8 |
| 7'6" | 4.5-9-14-19.5-25.5-32.5-41-51 | 20-16-12-10-8-8-8-8 |
| CASTING (LIGHT SALTWATER) | | |
| 7'0" | 5-11-17-24-31.5-40-49.5 | 12-10-10-10-8-8-8 |
| 7'6" | 5-10-15.5-21.5-28-35.5-44-55 | 12-10-10-10-8-8-8-8 |
| 8'0" | 4.5-9.5-15-21-28-36-45.5-57 | 16-12-10-8-8-8-8-8 |
| CASTING (SALMON/STEELHEAD) | | |
| 8'0" | 4.5-9.5-15-21-28-36-45.5-57 | 16-12-10-10-8-8-8-8 |
| 8'6" | 4.5-9.5-15.5-22.5-30.5-39.5-50-63 | 16-12-10-10-8-8-8-8 |
| 10'6" | 4.5-10-16.5-24-32-41-50.5-61-71.5-83 | 16-12-10-8-8-8-8-8-8-8 |
| SPINNING (BASS & WALLEYE/TROUT & PANFISH) | | |
| 4'6"UL | 5-11.5-20.5-31 | 20-10-8-6 |
| 5'0"UL | 5-10.5-17-25-34.25 | 20-16-10-8-6 |
| 5'6"L-M | 5.5-11.5-18.5-26.5-37 | 25-16-10-8-6 |
| 6'0"L-M | 4-9-15-22-30-40 | 25-20-16-10-8-7 |
| 6'6"L-M | 4-9-15-22.5-31.5-42.5 | 30-20-16-10-8-7 |
| 7'0"L-M | 4-8.5-13.5-19.5-27-36-49 | 30-20-16-10-8-7-6 |
| 7'6"L-M | 4.5-9.5-15.5-22.5-30.5-41-54 | 30-20-16-10-8-7-6 |
| SPINNING (SALMON/STEELHEAD) | | |
| 7'6" | 4.5-9.5-15.5-22.5-30.5-41-54 | 30-20-16-10-8-7-6 |
| 8'6" | 5.5-12-19.75-28.5-38-50.75-65 | 30-20-16-10-8-7-6 |
| 9'0" | 5-10.5-16.5-23.5-32-42-53-68.5 | 30-20-16-10-8-7-6 |
| FLY (LIGHT TO MED. FRESHWATER) | | |
| 6'0" | 4-8.5-13.5-19-25-32-40-50 | 10-4-4-3-3-2-2-2 |
| 6'6" | 4-8.5-13.5-19-25-33-41.5-52 | 12-4-4-3-3-2-2-2 |
| 7'0" | 4-9-15-21.5-28.5-36.6-45.5-56 | 12-4-4-3-3-2-2-2 |
| 7'6" | 4.5-9.5-15.5-22.5-30.5-39.5-49.5-61.5 | 12-4-4-4-3-3-3-3 |
| 8'0" | 4.25-9.5-15-21.5-29-37.25-46.25-55.5-65.5 | 12-4-4-4-4-3-3-3-3 |
| 8'6" | 4.875-10.375-17.375-25.125-33.125-41.625-50.875-60.875-71.875 | 12-4-4-4-4-3-3-3-3 |
| 9'0" | 4-9-15-22-29.5-37.5-46.625-56.75-67.25-78 | 12-10-4-4-4-4-3-3-3-3 |
| 9'6" | 4-9-15-22-29.5-37-45-53.25-62.125-71.375-81.25 | 12-10-4-4-4-4-3-3-3-3 |
| 10'0" | 4-9-15-22-30-39-48-57.5-68.375-79.375-90 | 12-10-4-4-4-4-3-3-3-3 |
| FLY (HVY. FRESHWATER & SALT.) | | |
| 8'6" | 4.875-10.375-17.375-25.125-33.125-41.625-50.875-60.875-71.875 | 16-12-5-5-5-4-4-4-4 |
| 9'0" | 4.5-9.5-15.5-22-29-36.5-44.5-54-64-76.5 | 16-12-5-5-5-5-4-4-4-4 |
| 9'0" salt. | 4.5-9.5-15.5-21.625-28.875-36.5-44.75-53.25-64-76 | 20-16-12-6-6-6-5-5-5-5 |
| 9'6" | 4-9-15-22-29.5-37-45-53.25-61.125-71.375-81.25 | 16-12-5-5-5-5-4-4-4-4 |
| 10'0" | 4-9-15-22-30-39-48-57.5-68.375-79.375-90 | 16-12-5-5-5-5-4-4-4-4 |



CLOTH SACKS

St. Croix rod sacks are available for most freshwater and many saltwater rod models. They provide added protection when in transit or, sadly, when in storage.



CLOTH ROD SACKS

| MODEL | ROD LENGTH & PIECES | NO. OF POCKETS |
|-------|--------------------------|----------------|
| RS29 | 8' - 4 PC., 8'6" - 4 PC. | 4 |
| RS32 | 9' - 4 PC., 9'6" - 4 PC. | 4 |
| RS36 | 5'6" - 2 PC. | 2 |
| RS39 | 6' - 2 PC. | 2 |
| RS42 | 6'6" - 2 PC. | 2 |
| RS45 | 7' - 2 PC. | 2 |
| RS48 | 7'6" - 2 PC. | 2 |
| RS51 | 8' - 2 PC. | 2 |
| RS54 | 8'6" - 2 PC. | 2 |
| RS57 | 9' - 2 PC. | 2 |
| RS60 | 9'6" - 2 PC. | 2 |
| RS63 | 10' - 2 PC. | 2 |
| RS66 | 10'6" - 2 PC. | 2 |
| RS74 | 6' - 1 PC. | 1 |
| RS80 | 6'6" - 1 PC. | 1 |
| RS86 | 7' - 1 PC. | 1 |
| RS92 | 7'6" - 1 PC. | 1 |
| RS98 | 8' - 1 PC. | 1 |

TRAVELER ROD CASES

Each St. Croix Traveler rod case features a durable 1000 denier nylon-covered rod tube. All models include foam-padded ends to protect rod tips and a reinforced handle. Our rod cases feature a divided liner for added protection.

FLY ROD/REEL CASES

| MODEL | ROD LENGTH & PIECES | NO. OF POCKETS |
|---------|---------------------|----------------|
| CFRRT29 | UP TO 9' - 4 PC. | 4 |
| CFRRT55 | UP TO 9' - 2 PC. | 2 |
| CFRRT64 | UP TO 10' - 2 PC. | 2 |

TRAVELER ROD CASES

| MODEL | ROD LENGTH & PIECES | NO. OF POCKETS |
|-------|--------------------------|----------------|
| RC22 | 6' - 4 PC. | 4 |
| RC28 | 8' - 4 PC. | 4 |
| RC29 | 8'6" - 4 PC. | 4 |
| RC30 | 6'6" - 3 PC. | 4 |
| RC31 | 9' - 4 PC. | 4 |
| RC32 | 7' - 3 PC., 9'6" - 4 PC. | 4 |
| RC34 | 7'6" - 3 PC. | 3 |
| RC36 | 5'6" - 2 PC. | 2 |
| RC39 | 6' - 2 PC. | 2 |
| RC42 | 6'6" - 2 PC. | 2 |
| RC45 | 7' - 2 PC. | 2 |
| RC48 | 7'6" - 2 PC. | 2 |
| RC51 | 8' - 2 PC. | 2 |
| RC54 | 8'6" - 2 PC. | 2 |
| RC57 | 9' - 2 PC. | 2 |
| RC60 | 9'6" - 2 PC. | 2 |
| RC63 | 10' - 2 PC. | 2 |
| RC66 | 10'6" - 2 PC. | 2 |
| RC74 | 6' - 1 PC. | 1 |
| RC80 | 6'6" - 1 PC. | 1 |
| RC86 | 7' - 1 PC. | 1 |

ICE ROD CASES

| MODEL | ROD LENGTH & NO. |
|-------|----------------------|
| IRC34 | 32" - 3 Rods & Reels |
| IRC44 | 42" - 3 Rods & Reels |





| | |
|--------|---|
| F1K | FLEX COAT® HIGH BUILD LOADED SYRINGE KIT Two 12 cc. syringes loaded with resin and hardener, 4 finishing brushes, mixing cups and sticks. |
| F2K | FLEX COAT® HIGH BUILD SUPER KIT To finish your rod and guide wrapping. Includes 2 oz. rod wrapping finish, 2 coded syringes, 5 brushes, 5 mixing cups, sticker and underwrap template. |
| F2S | 2 oz. KIT FLEX COAT® HIGH BUILD WRAP FINISH Color-coded, reusable syringes supplied with 2 oz. kit, guarantees exact, accurate measurement of FLEX COAT® 50/50 mix. |
| F1KL | FLEX COAT® LITE LOADED SYRINGE KIT 24cc w/brushes, cups & sticks. |
| F2KL | FLEX COAT® LITE SUPER KIT - 2 oz. w/syringes, brushes, cups & sticks. |
| F2SL | 2 oz. KIT FLEX COAT® LITE WRAP FINISH w/syringes. |
| L4 | FLEX COAT® EPOXY BRUSH CLEANER 4oz. |
| C1 | FLEX COAT® COLOR PRESERVER Great color retention for threads. Non-yellowing, easy-to-use, 2 or 3 coats on regular thread. |
| G4 | 4 oz. FLEX COAT® EPOXY GLUE High-strength epoxy for gluing handles, reel seats and butt kits. |
| Q4 | 4 oz. KIT FLEX COAT® FIVE MINUTE EPOXY GLUE -Yorker Cap. |
| T2 | FLEX COAT® TIP TOP ADHESIVE Easy to use, has great strength. Instructions included. |
| J2 | FLEX COAT® GUIDE FOOT ADHESIVE |
| K1 | UTILITY KNIFE WITH 6 BLADES |
| K2 | PACKAGE OF 5 KNIFE BLADES |
| B10 | PACKAGE OF 10 - 1/4" BRUSHES - Peg Board. |
| B10L | PACKAGE OF 10 - 1/8" LITE BRUSHES - Peg Board. |
| HW1 | HAND ROD WRAPPER This extendible rod wrapper can be used for all lengths of rods. Has controlled thread tension and adjustable thread feed. Designed to do precision wrappings. |
| GM6 | FINISHING MOTOR 6 RPM This quality 6 r.p.m. continuous-duty gear motor rotates rod for even drying of finishes — excellent accessory to power wrapper. |
| GM18 | FINISHING MOTOR 18 RPM |
| 36GX25 | 25 FT. ROLL 1/2" WIDE 36 GRIT REAMER ABRASIVE |
| D10 | FLEX COAT® STEP BY STEP ROD BUILDING BOOK Step-by-step illustrated instructions. Contains techniques for both experienced and first-time rod builders. |
| D20 | FLEX COAT® START TO FINISH FLY ROD BUILDING BOOK Step-by-step illustrated instructions. Contains techniques for both experienced and first-time rod builders. |
| DV1 | FLEX COAT® ROD BUILDING "HOW WE DO IT" VIDEO |

FLEX COAT® SMALL BUSINESS START-UP KIT

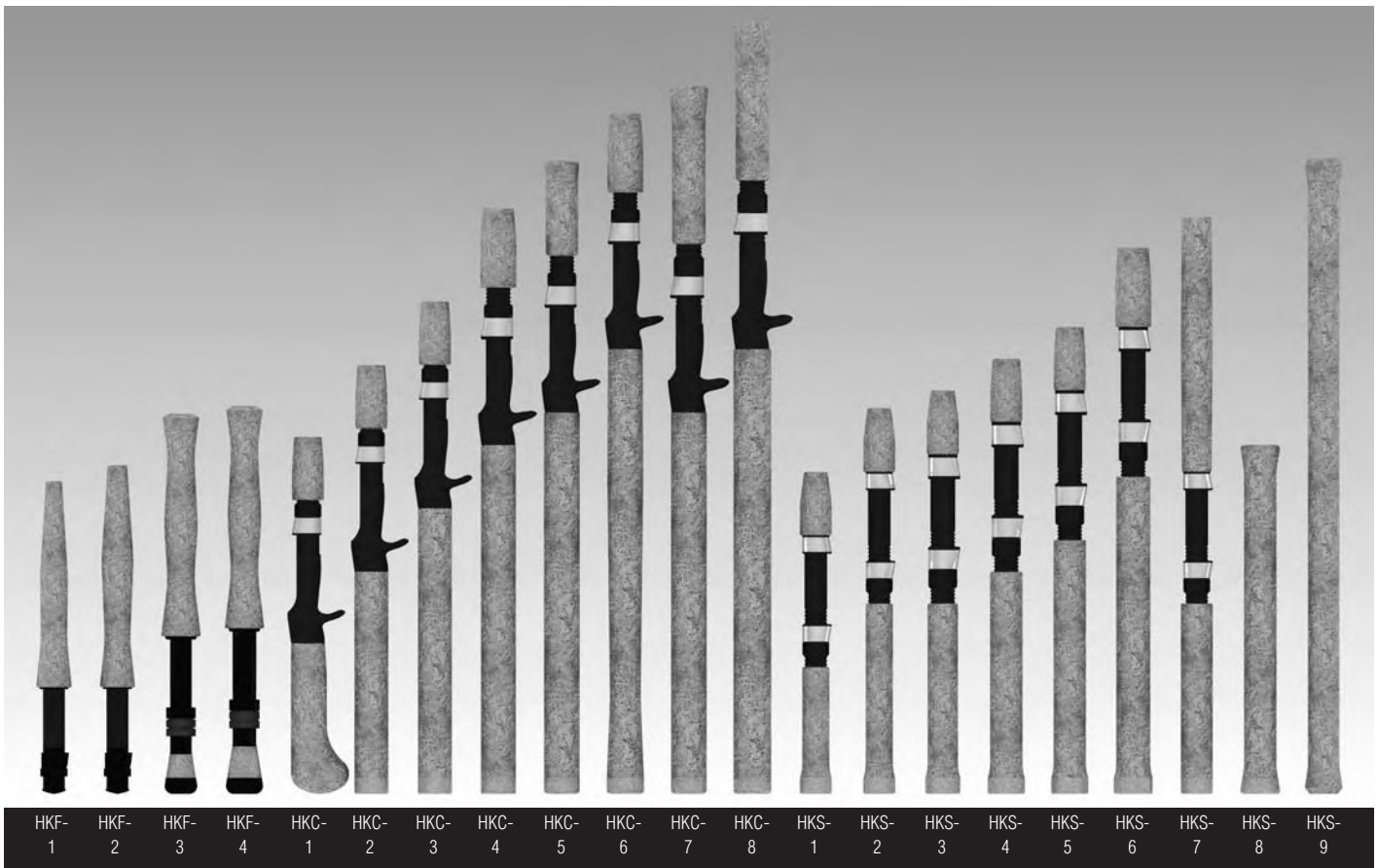
This kit has the tools, supplies and instructional materials you need to start a small business building and repairing custom rods. Earn extra money, keep your equipment in tip-top shape and get inside fishing information from your customers; the expert fisherman who purchase custom rods and have rods repaired in your shop. This complete start up kit will save you \$\$\$.

FSB1

KIT INCLUDES:

- | | |
|---|--|
| 1- Flex Coat Professional Hand Rod Wrapper | 1- Flex Coat Guide Foot Adhesive |
| 1- Flex Coat Professional Finishing Motor | 1- Flex Coat Utility Knife with 6 extra blades |
| 1- Flex Coat Step By Step Rod Building Book | 1- Flex Coat Reamer Abrasive (12 ft. roll) |
| 1- Flex Coat Rod Building "How We Do It" DVD | 1- Flex Coat Thread and Line Clippers |
| 1- Flex Coat High Build 2 oz. kit with two syringes | 10- Flex Coat Finishing Brushes |
| 1- Flex Coat Epoxy Glue 4 oz. kit | 10- Flex Coat Mixing Cups |
| 1- Flex Coat Tip Top Adhesive | 10- Flex Coat Mixing Sticks |





CUSTOM HANDLE KITS

| MODEL & ORDER NO. | TYPE | REEL SEAT | OVERALL LENGTH | BUTT & FLY CORK LENGTH | FOREGRIP & FIGHTING BUTT LENGTH | RETAIL PRICE |
|-------------------|----------|--|----------------|------------------------|---------------------------------|--------------|
| HKF-1 | Fly | Uplocking, black anodized aluminum with ebony wood spacer. | 9 7/8" | 6 1/2" | - | \$30.00 |
| HKF-2 | Fly | Uplocking, black anodized aluminum with ebony wood spacer. | 10 3/8" | 7" | - | \$30.00 |
| HKF-3 | Fly | Uplocking, black anodized aluminum. | 12" | 7" | 1 1/4" | \$30.00 |
| HKF-4 | Fly | Uplocking, black anodized aluminum. | 12 1/4" | 7" | 1 1/2" | \$33.00 |
| HKC-1 | Casting | Fuji® TCS 16 with frosted silver hood. | 11 1/4" | 4 3/4" | 2" | \$28.00 |
| HKC-2 | Casting | Fuji® TCS 16 with frosted silver hood. | 13 1/2" | 7" | 2" | \$20.00 |
| HKC-3 | Casting | Fuji® TCS 16 with frosted silver hood. | 15 1/2" | 9" | 2" | \$20.00 |
| HKC-4 | Casting | Fuji® TCS 17 with frosted silver hood. | 18 3/8" | 11" | 2 1/2" | \$23.00 |
| HKC-5 | Casting | Fuji® TCS 17 with frosted silver hood. | 19 7/8" | 12" | 3" | \$25.00 |
| HKC-6 | Casting | Fuji® TCS 17 with frosted silver hood. | 21 3/8" | 14" | 2 1/2" | \$30.00 |
| HKC-7 | Casting | Fuji® TCS 18 with frosted silver hood. | 22 1/4" | 12" | 5" | \$27.00 |
| HKC-8 | Casting | Fuji® TCS 18 with frosted silver hood. | 24 1/4" | 14" | 5" | \$28.00 |
| HKS-1 | Spinning | Fuji® DPS 16 with frosted silver hoods. | 10 1/8" | 4" | 2" | \$18.00 |
| HKS-2 | Spinning | Fuji® DPS 16 with frosted silver hoods. | 12 1/8" | 6" | 2" | \$19.00 |
| HKS-3 | Spinning | Fuji® DPS 17 with frosted silver hoods. | 12 3/4" | 6" | 2" | \$20.00 |
| HKS-4 | Spinning | Fuji® DPS 17 with frosted silver hoods. | 13 3/4" | 7" | 2" | \$20.00 |
| HKS-5 | Spinning | Fuji® DPS 17 with frosted silver hoods. | 14 3/4" | 8" | 2" | \$21.00 |
| HKS-6 | Spinning | Fuji® DPS 17 with frosted silver hoods. | 17 1/4" | 10" | 2 1/2" | \$22.00 |
| HKS-7 | Spinning | Fuji® DPS 16 with frosted silver hoods. | 18 1/8" | 6" | 8" | \$20.00 |
| HKS-8 | Spinning | N/A | 11" | - | - | \$20.00 |
| HKS-9 | Spinning | N/A | 20" | - | - | \$23.00 |

Every Custom Handle Kit features an 18# urethane foam shim and three black, PVC rubber wind checks.

St. Croix's custom handle kits feature top-quality components and come complete with butt cap cork plugs, winding checks and graphite reel seat shims where applicable.

CORK RINGS

Make your own custom handle shapes from our "super-quality" cork rings.

ORDER NO. 122-101
DESCRIPTION 1 1/4" x 1/2" x 1/4" I.D.



ROD BLANK COLORS



GLOSS GALLATIN GREEN



GLOSS BELIZE BLUE



MATTE SPRUCE GREEN



GLOSS CANTEEN GREEN PEARL



SATIN BLACK



GLOSS FOREST GREEN PEARL



GLOSS BLUE/GREEN FLIP



GLOSS COBALT BLUE PEARL



CARBON PEARL



GLOSS BLACK PEARL



COPPER PEARL



GLOSS GREEN



FUCHSIA METALLIC



GLOSS BURGUNDY



GLOSS BLACK