



ADVANCED ROD DEVELOPMENT



ADVANCED ROD TECHNOLOGY

CTS prides itself on being at the leading edge of rod design. We are focused on intensive product development and continuous improvement in our design and manufacturing processes.

Carbon Helix Core
Superior hoop strength
Improved response



A single carbon spiral is at the core of the blank. This type of structure is commonly regarded as the most effective way of maintaining cross section stability during bending. Our carbon helix core will minimize cross sectional deformation during loading, improving power and response.

In a flexing situation, the blank is undergoing pressures that can cause it to change from a round shape to a slightly oval shape. Even a small 2% reduction in section height caused by these pressures will reduce the stiffness of the rod by around 10%. The higher the loading, the softer the blank will become, reducing its ability to fight fish.

All CTS carbon helix core blanks boast 100% non woven fiber.

A non woven fiber can achieve 100%

A non woven fiber can achieve 100% of its tensile and compressive loading, unlike woven based scrims which exhibit large amounts of fiber crimping resulting in greatly reduced fiber loading potential.

Variable fit length

Reduced section-to-section flat spots
Reduced swing weight
Smooth load transfer

The join lengths between each section within our multi piece blanks are varied according to the load that they are designed to carry. This ensures flat spots and swing weights are minimized.

Modulus Replacement Technology (MRT)

This new type of construction enables us to place totally different modulus materials at each part of the blank.

Unlike traditional multi modulus systems which lay up materials of differing modulus materials together, our new Modulus Replacement Technology is all together different, taking blank manufacture to a new level.

100% Carbon Construction

Super light weight construction and Superior strength.

Through the use of the CTS carbon helix core, blanks are able to boast a true 100% carbon construction. This ensures response and agility are optimized through utilizing the lightweight and high strength characteristics that only carbon can give.

Computer Aided Engineering CAE

Computer Aided Engineering has enabled CTS to design precise blank ranges with perfectly progressive actions through the entire range.

Multi carbon construction

CTS has sourced the highest quality fabrics from USA, Japan and Korea. Up to five different types of carbon are used in each blank. Each type is placed at various parts of the blank to optimize strength and weight.

CTS's ultra high modulus fiber boasts the highest tensile and compressive strength of any fiber in its class.

Internal High Strength ferrule

A high strength ferrule is placed at each join, to provide superior crush and split resistance. There is no need for the rod builder to place a ferrule wrap at this point for reinforcement.

Target Zero Fibre Alignment

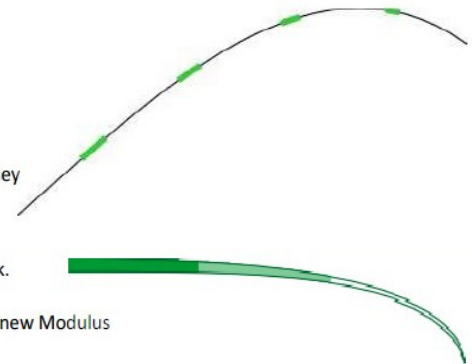
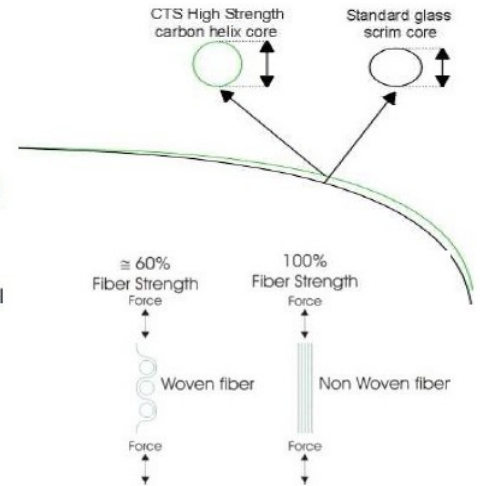
Fiber alignment along the length of any blank is critical. Even the smallest deviation in fiber alignment from the axis of load will greatly reduce the strength of the blank. All CTS blanks are designed and produced to ensure all fiber is aligned as near perfect as can be with the load.

Two pack Marine Grade Paint system

All CTS blanks are coated with a marine grade two pack paint system for superior colour and toughness.

Super Low Resin Systems

New for '09 is the introduction of our bespoke super low resin systems. Utilising materials with resin contents up to 30% less than standard materials, CTS's latest blank line ups are lighter, stronger and narrower. Increasing bending limits, response and improved casting.





S8 SURF

57msi MODULUS CARBON BLEND

The S8 Surf series are the lightest, most powerful long range casting blanks in the world today.

These blanks feature a zoned action; the butt is stiff and tapers into a moderate midsection and then a fast action tip. This design transfers all the power you put into the cast efficiently to your payload. The Surf series excels at casting plugs and poppers at large predatory fish and has become a favorite of many who chase Roosters and Jacks on Mexican beaches. Metals are put in orbit and schools on the far side of the bar are no longer safe. S8's work well built as spinners or conventional and the heavier rated rods perform extremely well as weight and bait heavers targeting stripers, drum and sharks.

MODEL	LENGTH # of PCS	LURE (OUNCES)	POWER	ACTION	BLANK WT (OUNCES)	BUTT DIA. (DEC. IN)	TIP DIA. (64ths)	PRICE
SE-1061	10'-6" / 2	1-4	MEDIUM	X-FAST	6.75	.83	8	TBD
SE-1101	11'-0" / 2	2-4	MEDIUM	X-FAST	9.6	.86	9	TBD
SE-1160	11'-6" / 2	1-3	LIGHT	X-FAST	7.56	.87	8	TBD
S8-1201	12'-0" / 2	2-4	MEDIUM	X-FAST	9.93	.91	9	TBD
SE-1202	12'-0" / 2	3-6	HEAVY	X-FAST	11.6	.90	9	TBD
SE-1262	12'-6" / 2	3-6	HEAVY	X-FAST	12.75	.87	9	TBD
SE-1362	13'-6" / 2	3-6	HEAVY	X-FAST	13.06	.92	9	TBD
SE-1363	13'-6" / 2	5-8	X-HEAVY	X-FAST	12.5	.90	9.5	TBD
SE-1364	13'-6" / 2	8-12	XX-HEAVY	X-FAST	13.93	.91	10	TBD





Captain Bob Bott
(Backlash Sportfishing)
powercasting the
Parabolic
12ft / 2-4 oz.



Prostaff Rod Smith-
Spring 2010
Delaware River
Stripers!

Parabolic
12ft / 2-4oz.

PARABOLIC SERIES



Prostaff J.M. Basile

Mexico 2010
Roosterfish

12' / 3-6oz Parabolic



C/S PARABOLICS

57msi MODULUS CARBON BLEND

This series features the slower rod action that many Northeast anglers prefer but does it with an incredible blend of lightweight high modulus carbons in an extremely thin profile blank.

These rods load evenly in that familiar smooth and forgiving arc while having a flexible tip that provides the ability to work Poppers, Swimmers and bucktails well. The extremely thin taper cuts effortlessly through the wind often encountered casting from the beaches and rockpiles of the Striper Coast.

The high modulus carbon blend with no woven fiber adds casting performance never before experienced in slower action rods. These rods surpass the performance of the legendary Lamiglas GSB series while being lighter in the hand.

Given their very thin diameter these blanks have an amazing amount of reserve power. These rods do not collapse under a powerful cast and their pulling power can turn the most powerful fish in the strongest undertow.

These rods are rated precisely and perform very well even at the extremes of their ratings and surprisingly, cast below their ratings with authority.



MODEL	LENGTH # of PCS	LURE (OUNCES)	POWER	ACTION	BLANK WT (OUNCES)	BUTT DIA. (DEC. IN)	TIP DIA. (64ths)	PRICE
VT-1104	11'-0" / 2	2-4	MEDIUM	MOD	6.1	.63	6	TBD
VT-1106	11'-0" / 2	3-6	HEAVY	MOD	6.8	.66	7	TBD
VT-1109	11'-0" / 2	4-8	X-HEAVY	MOD	7.9	.86	8.5	TBD
VT-1204	12'-0" / 2	2-4	MEDIUM	MOD.	7.0	.66	6	TBD
VT-1206	12'-0" / 2	3-6	HEAVY	MOD	7.8	.69	7	TBD
VT-1209	12'-0" / 2	4-8	X-HEAVY	MOD	8.9	.91	8.5	TBD



PLUGGING JIGGING INSHORE

TUNA JIGGING

MODEL	LENGTH # of PCS	LURE (OUNCES)	POWER	DEAD LIFT	BLANK WT (OUNCES)	BUTT DIA. (DEC. IN)	TIP DIA. (64ths)	PRICE
TJ-561	5'-6" / 1	2 1/8 - 4 3/8	MED-LGT	—	2.4	.42	7.5	TBD
TJ-562	5'-6" / 1	2 7/8 - 6	MED	45LB	2.7	.46	8	TBD
TJ-563	5'-6" / 1	4 1/4 - 7 3/4	MED-HVY	55LB	3.4	.45	8.5	TBD
TJ-564	5'-6" / 1	6 3/8 - 11 1/2	HVY	65LB	3.9	.48	9	TBD
TJ-565	5'-6" / 1	9 - 16	X-HVY	—	4.7	.52	9.5	TBD
TJ-702	7'-0" / 1	2 7/8 - 6	MED	45LB	3.7	.48	8	TBD
TJ-703	7'-0" / 1	4 1/4 - 7 3/4	MED-HVY	55LB	4.4	.52	8.5	TBD
TJ-704	7'-0" / 1	6 3/8 - 11 1/2	HVY	65LB	6.1	.591	9	TBD
TJ-705	7'-0" / 1	9 - 16	X-HVY	—	7	.625	9.5	TBD

INSHORE

MODEL	LENGTH # of PCS	LURE (OUNCES)	POWER	ACTION	BLANK WT (OUNCES)	BUTT DIA. (DEC. IN)	TIP DIA. (64ths)	PRICE
IS-702	7'-0" / 1	1/2 - 2	MEDIUM	FAST	2.9	.587	6	TBD
IS-703	7'-0" / 1	7/8 - 2 1/2	MED-HVY	FAST	3.25	.693	6.5	TBD
IS-704	7'-0" / 1	1 - 3 1/4	HEAVY	FAST	4.25	.539	7	TBD
IS-705	7'-0" / 1	1 1/4 - 4 1/4	X-HEAVY	FAST	5.46	.743	7	TBD
IS-706	7'-0" / 1	1 5/8 - 5 3/4	XX-HEAVY	MOD-FAST	7.13	.677	8	TBD

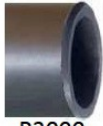
SURF & JETTY PLUG / JIG

MODEL	LENGTH # of PCS	LURE (OUNCES)	POWER	ACTION	BLANK WT (OUNCES)	BUTT DIA. (DEC. IN)	TIP DIA. (64ths)	PRICE
PJ-802	8'-0" / 2	1/2-1 1/8	MEDIUM	MOD	2.6	.48	6	TBD
PJ-903	9'-0" / 2	1 - 2 3/8	MED-HVY	MOD	3.4	.58	6	TBD
PJ-906	9'-0" / 2	2 - 4	MED-HVY	MOD-FAST	4.9	.69	6.5	TBD
PJ-1004	10'-0" / 2	1 - 3	MED	FAST	4.6	.55	6.5	TBD
PJ-1006	10'-0" / 2	2 - 4	MED-HVY	MOD-FAST	6.1	.75	7	TBD
PJ-1008	10'-0" / 2	3 - 6	HEAVY	MOD-FAST	8.8	.84	8	TBD
PJ-1009	10'-0" / 2	4 - 8	XX-HEAVY	MOD-FAST	9.2	.91	8	TBD



COLORS

Standard Colours



P2000



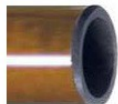
Clear

Custom Colours

Semi Transparent Colour High Gloss :



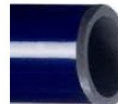
Cobalt



Honey Brown



Golden Olive



Deep Blue



Emerald



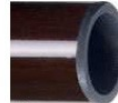
Golden Brown



Forest Green



Charcoal



Chestnut



Olive



Silver

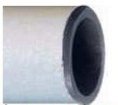


Golden Plum



Titanium

Solid Colour High Gloss :



Alpine White



Jet Black



Tangerine



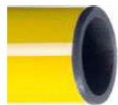
Candy Apple Red



Pink



Latte



Lemon

Satin finish :



Satin Green



Satin Olive



Satin Blue



WARRANTY

All CTS rod blanks are individually manufactured and inspected with the utmost care.

CTS blanks enjoy a lifetime blank replacement warranty. This warranty is limited to defects in materials and workmanship and excludes abuse, mishandling and overstress, i.e., exceeding casting weight rating, user error when fighting fish like high sticking and/or dead lifting fish.

Should failure occur due to defects in materials or workmanship (to be determined by CTS), the rod blank section would be repaired or replaced (to be determined by CTS) for no charge. Breakage deemed to be caused by a non-covered event can be remedied, a blank section replacement service is available for a reasonable cost.

